



Owyhee's  
winery  
Page 16

## Skewed budget affects probation office, 5

Step back in time, Page 14  
Area museums offer peeks  
at regional history

County planning, Page 9  
Initiative law could change Natural  
Resources Plan, Murphy TMP

Established 1865

# The Owyhee Avalanche

VOL. 24, NO. 13 75 CENTS

HOMEDALE, OWYHEE COUNTY, IDAHO

WEDNESDAY, APRIL 1, 2009

## At last: Initiative is law

Eight-year journey  
ends with President's  
signature Monday

A strong contingent of Idahoans stood proudly in a conference room at the White House on Monday as President Obama signed

the bill that makes the Owyhee Initiative law.

"To be in the White House at the formal conclusion of the process, at least as far as the legislative side of it goes, was really a momentous opportunity," Initiative sponsor Sen. Mike Crapo (R-Idaho) said.

"On the faces of all the Idaho-

*"It was big smiles and hearty congratulations and a tremendous sense of accomplishment."*

— Sen. Mike Crapo  
On signing scene

The signing ceremony in a conference at the White House was attended by Initiative Work Group chair Fred Grant, Shoshone-Paiute Tribal chair Robert Bear and Rick Johnson, the executive di-

rector of the Idaho Conservation



### Unique wilderness spot formalized

Crutcher's Crossing on the Owyhee River is a historic geographic spot in U.S. wilderness because it's the only place where a motorized crossing has survived a wilderness designation.

## Work only just beginning as implementation efforts begin

After eight years of diligence and perseverance, the Owyhee Initiative is law.

The Initiative became law Monday when President Obama signed the public lands omnibus bill in an afternoon White House ceremony attended by Sen. Mike Crapo (R-Idaho) and several Initiative Work Group members, including chair Fred Kelly Grant.

"On a personal, state-based level, in my opinion it's clearly the most significant endeavor that I have been involved in since I've

been in the Senate," Crapo said when summing up where the bill ranks among the Idaho-specific work during his congressional career.

The presidential signature came five days after the U.S. House of Representatives approved its version of the public lands omnibus bill by a 277-144 margin. It also marks the first public lands law related to Idaho in nearly 30 years.

"It's a great day," a self-described "giddy" Grant said

— See *Work*, page 2

*"Now the pressure is really up, and all the conservation groups ... are on the street corners ... getting the money together."*

— Fred Kelly Grant  
Initiative Work Group  
chair on compensation



### Cultural protections mandated

The Shoshone-Paiute Tribes' sensitive cultural landmarks will receive protection from the dangers of curious visitors as the Initiative provides tribal rangers to help patrol the areas containing artifacts.

### Subscribe today

Get the news source of the Owyhees delivered  
directly to you each Wednesday

Only \$31.80 in Owyhee County

Call 337-4681

Obituary

6

Calendar

7

Peary Perry

7

Sports

17

Looking Back

19

Commentary

20-21

Legals

22-26

Classifieds

26-27

## Inside

Eby helps in  
Outlaws win  
Page 17



# Owyhee Initiative becomes law



**Ranchers’ heritage preserved**  
*County rancher Brenda Richards, who recently stepped down as a member of the Owyhee Initiative Work Group representing the Idaho Borderlands Trust, takes in President Obama’s signing ceremony inside Sen. Mike Crapo’s Boise office Monday. Submitted photo*

## ✓ Signature: Idahoans gather in D.C., Boise to watch historic lands bill signing

*From Page 1*  
League.  
In Crapo’s Boise office, several other Initiative supporters, including Board of County Commissioners chair Jerry Hoagland and Owyhee Cattlemen’s Association director Brenda Richards, were on hand to watch a video feed of the signing ceremony for the omnibus public lands bill of which the Initiative was part.  
“It feels fantastic,” Hoagland said. “It gives us a lot of assurance that our stability is there and that

stability has been in question in the past.  
“We want to have a process in there where we can always see the viable livestock industry out there in the county, which includes not only myself but all the ranchers in the county.”  
In Washington, the excitement could hardly be contained.  
“It was big smiles and hearty congratulations and a tremendous sense of accomplishment to be standing in the White House together,” Crapo said.  
Grant’s appearance continued a whirlwind week carrying out responsibilities for the Initiative as well as traveling to New Mexico for a merger of the Stewards of the Range and the American Land Foundation to form American Stewards of Liberty.  
Crapo was quick to praise Grant for his work with the Initiative.  
“He’s the glue that held this together,” Crapo said. “Nobody deserved to be there more than Fred.”  
— JPB

## ✓ Work: Law opens the door to complete private compensation package

*From Page 1*  
Wednesday after the vote while swapping dying cell phones to complete an interview. “It reminds me of the comment that (then-Owyhee County Commissioner) Chris Salove made the day the agreement was signed.  
“He said on the way out to Murphy there was a sun breaking through the clouds and he thought, ‘That’s the future of Owyhee County, if we can get this done.’”  
Every major component that was agreed upon and put to paper during eight years of collaboration from myriad interest groups rests in the final version of the Owyhee Initiative Agreement.  
Now, Grant and Crapo agree, the real work begins.  
“I have a huge smile on my face, and I’m taking a deep breath,” Crapo said after the House vote. “Frankly, this is a tremendous victory, but we still have the implementation to be involved with. So I’m just getting ready for another hard push.”  
The push now includes securing private funding to retire grazing lands marked for wilderness inclusion and obtaining agreements with the Department of the Interior and Bureau of Land Management on the practical implementation of the Initiative.

### Private dollars now may start flowing

Work has been done on rounding up close to \$10 million in private funding to compensate 15 county ranchers for the retirement of animal units monthly (AUMs), easements and water rights. But it was a long game of wait-and-see.  
“The foundations have been interested,” Grant said. “It’s been 29 years since Idaho got a bill of any kind passed as to the public lands. So they were waiting to see if it passed.  
“Now the pressure is really up, and all the conservation groups committed to me in a conference call that they are on the street corners now getting the money

together.”  
Idaho Conservation League executive director Rick Johnson, who flew to Washington for the signing ceremony, dedicated his organization to its continued involvement in the Initiative process. John Robison has represented the ICL on the work group.  
“I speak for the entire conservation community when I say we bring the same commitment to implementing the whole thing as we did to passing this piece of it,” Johnson said.  
Johnson said the private funding could come from corporate supporters, private foundations and individuals.  
“There are a number of people that both have the means and the interest to see this move forward,” he said.  
Grant said the final price tag, which could dip below \$10 million, is less than original estimates.  
It’s well known that the agreement assigns 517,000 acres as wilderness and preserves multiple use for much of the county to ensure that ranching will continue as the vital economic element it is for Owyhee County and can co-exist with recreational endeavors.

“There are tremendous, tremendous precedents in there,” Grant said of the Initiative. “One of the things (in the agreement) was that snowmobiles were exempted from the trailing process, and that’s a big boon for the people who snowmobile.”

### Motorized crossing stays put in wilderness

There’s a bigger slice of history, however, Grant is quick to point out.  
Crutcher’s Crossing on the Owyhee River will remain open to motorized access even though it is part of the 316 miles of streams and rivers now designated as Wild and Scenic Rivers in Owyhee County.  
“To my knowledge, it’s the only Wild and Scenic River in the U.S. where the bill allowed an

open motorized crossing to stay,” Grant said.  
Another important component related to Wild and Scenic designation aims to avoid difficulties experienced in Oregon when a judge kicked cattle off land near designated water.  
Grant said work group members Frank Bachman, representing Owyhee County, Dr. Chad Gibson, representing ranchers, and Idaho Rivers United executive director Bill Sedivy worked on smoothing the waters.  
“(The three men) went through very meticulously with the ranchers and identified every spot on one of those rivers where there might be a conflict with cattle and the river, and we deleted those stretches of river from the designation,” Grant said.  
“That was a very laborious thing to go through, but we had learned from what had happened in Oregon. And the ranchers as well as the conservation groups didn’t want to get bogged down in the courts. That was a very significant difference in this designation of rivers (from past) designations.”

### Water rights gain protection under SRBA

Another stipulation makes the Initiative agreement part of the Snake River Basin Adjudication, which will reserve future water rights for domestic or municipal use. In what he called a “very big victory for the landowners and water rights users”, the mandate avoids the possibility of radicals challenging water rights by asking the Department of Water Resources or other water officials for a mechanical measuring of water.  
“By reserving future water rights, that means you can’t mechanically measure because you don’t know what those (rights) are going to be in the future,” Grant said.  
The Initiative also mandates increased BLM law enforcement personnel and a focus on protection of sensitive cultural sites held

sacred by the Shoshone-Paiute Tribes, which was represented in Washington on Monday by chairman Robert Bear.  
The Science Review will be implemented, and Grant doesn’t see any language that can be exploited by radical anti-grazing interests such as Jon Marvel and the Western Watersheds Project.  
“I suspect that (radicals) will try to find a way to challenge the Science Review, but you know, the way we did it in the agreement there isn’t anything really legally that they can challenge,” Grant said.  
“(The language) doesn’t bind the BLM. The purpose of the Science Review is to put into the record good, sound science by which an administrative judge or the BLM itself can gauge its own work. It’s not a mandatory thing. It’s a guide. It gives the ranchers and the Board of Directors of the Initiative a standard by which to gauge the BLM’s work. It also gives the BLM’s managers a standard by which to gauge (their) work.”

### Initiative solidifies multiple uses of land

Other multiple use protections were achieved, too:  
• 199,000 acres of wilderness study area (WSA) will be released by the BLM without the specter of agency officials reneging later, Grant said. The “hard release” solidifies the future of cattle grazing in those WSAs, although grazing still can be suspended under multiple-use guidelines.  
“This bill says that there have been enough studies in Owyhee County, and that the wilderness study areas not designated as wilderness in this bill are released to multiple use and are removed from the section in FLPMA by which they could be studied,” Grant said.  
• In a stipulation that was hammered out to keep part of the coalition together, Grant said the BLM won’t be allowed to “interfere” in areas already used by guides and outfitters for their

businesses.  
Idaho Outfitters and Guides Association executive director Grant Simonds balked hard because there was no specific language to prevent a federal agency from threatening existing outfitter operations such as the U.S. Forest Service had done in the Frank Church River of No Return Wilderness Area.  
But in a stroke that may have saved the work group, Grant asked the Board of County Commissioners to employ its coordination status under the Federal Land Policy and Management Act (FLPMA) on behalf of the outfitters if the BLM ever tried to interfere in existing guide and outfitter sites.  
“And the Board agreed to do that,” Grant said. “The basis of that agreement and knowing how coordination has worked successfully so many years, the outfitters and guides agreed to go with that.”  
• There also will be appropriations for new BLM rangers and investigators assigned to Owyhee County for enforcement of recreation laws and to be on the lookout for public lands violations.

### Travel plans may need to be reworked now

Grant said the Initiative will make all travel management plans developed by BLM obsolete if they are not consistent with what the Initiative mandates for the entire Owyhee Front.  
That includes the Murphy Sub-Region Travel Management Plan, which is near completion.  
“There might be a trail that goes into one or the other (plan map), so they are artificially looking at these things,” Grant said of the current travel management planning policy.  
“They will have to take a look at the entire Owyhee Front, and they will have to take each of those sub-basins and make sure they can be implemented on an Owyhee Front basis.”  
— JPB



# Gateway West project may face its own resistance

Project unlikely to see community action groups in siting process

Despite the recent re-evaluation of the routing process brought to the table by Idaho Power Co. on its Boardman-to-Hemingway (B2H) 500kV transmission line, its sister project, the Gateway West 500kV line, does not seem to be inviting community and landowner involvement in its own siting. The Gateway West Transmission Line Project is a joint project between Idaho Power and Rocky Mountain Power to build, operate and maintain approximately 1,150 miles of new 230kV and 500kV transmission lines across southern Wyoming and southern Idaho.

“We’re working with Rocky Mountain Power to determine if our schedule with the Gateway West Project is going to allow something like what we’ve done with Boardman-to-Hemingway,” Idaho Power project manager Doug Docktor said Wednesday. “I don’t have an answer on that quite yet. We’re a little further along on the Gateway West project, and there are significant implications on doing that for the schedule, so I’m not sure how our partner is going to view that.

“What we’ve been doing instead of the community action groups that we’re forming for B2H, is we’ve been meeting with groups of private property owners in areas they do have concerns with,” he said, “and listening to those concerns, and trying to come up with an alternate route that would address their concerns that would be palatable to them as well as the project. I anticipate that’s probably how we’re going to end up with Gateway West.

“We have had a lot of success on that (sort of negotiation). So far, they (property owners) seem to be pretty pleased with what we’ve worked out with them.”

The line, which will cross the breadth of southern Idaho, including farm-use lands in the southern portion of Owyhee County, has remained below-the-radar to some extent, overshadowed by the fight of hundreds of landowners in Malheur and Owyhee counties against the controversial routing of B2H. That quiet may not last much longer, as residents in Murphy, Bruneau, Grand View and Oreana have begun to question the planned course of the line (*see Letters to the Editor, page 21*).

For landowners, time still exists to give input, and Docktor stressed that — while Gateway West is farther along in the planning process — routing



Towers on the Gateway West line will also be 500kV constructions much like these 150- to 180-foot towers on the PacifiCorp line that traverses Owyhee County, Idaho Power confirmed.

flexibility still exists within, and possibly beyond, mapped corridors. However, the clock is

ticking. The draft Environmental Impact Statement (EIS) is expected in August, and the final

EIS in June of 2010, roughly a year ahead of B2H.

The Bureau of Land Management should be holding a number of open houses and public meetings in the 90 days following the August release of the draft EIS, which will give Idaho Power a good idea of where the line will be on its public lands sections — roughly half the 1,000-mile line’s length.

“After that point we can really start looking at the private property,” Docktor said. “We’ll have to do some risk analysis to see how certain we think the route is going to end up on specific areas of the project on public lands to determine if we want to pursue any private information. We’ll have a really good idea of where it’s going to end up after the final Environmental Impact Statement, which is next year — so there’s still time in the process to evaluate the routes and come up with something that private property owners can live with.”

Docktor said the post-draft EIS public meetings and 90-day comment period was the time when concerned landowners needed to contact the project, either through the BLM or directly.

Idaho Power has just created a new Web site specific to Gateway West, which can be accessed at [www.gatewaywestproject.com](http://www.gatewaywestproject.com).

— MML



## OPEN AN ACCOUNT WITH US AND OPEN DOORS FOR OTHERS IN YOUR COMMUNITY

Open any new Checking Account,  
and we’ll make a donation to United Way

**PERSONAL AND BUSINESS CHECKING ACCOUNTS:**

Make your dollars count. For every checking account opened with a balance of \$1,500 or more, Bank of the Cascades will make a donation to help others in your community because we recognize community is the backbone of the local economy.

Enjoy the security of full (100%) insurance under the FDIC Temporary Guarantee Program on all Personal and Business Checking Accounts through 12/31/2009. Individuals, Non-Profits and Sole Proprietorships can also enjoy unlimited FDIC insurance on their interest bearing accounts (NOW Accounts) with interest rates of 0.50 or less. All other interest bearing accounts are FDIC insured up to \$250,000.



We will make a donation to United Way of Treasure Valley for every new checking account opened.

Open a Money Market Account  
and support your local economy

**MONEY MARKET ACCOUNT:** We seek to add value to money on deposit by reinvesting it locally in a safe and secure manner.

**ENJOY LIQUIDITY AND GREAT RATES:**

0 to \$24,999.99	1.25%	APY
\$25,000 - \$99,999	1.75%	APY
Over \$100,000	2.00%	APY

Refer to the following for additional account requirements. All annual percentage yields (APYs) are accurate as of 3/16/09 and are subject to change without notice. Minimum opening deposit of \$1,000.00. New money only, funds must not come from another Bank of the Cascades deposit account. Deposit balances are insured up to the maximum allowable limits. Fees may reduce the earnings on the account.

KUNA | FRUITLAND | BOISE | EAGLE | GARDEN CITY | MERIDIAN | CALDWELL | NAMPA  
208-319-2400 | [BOTC.COM](http://BOTC.COM) | MEMBER FDIC





# Homedale man arrested at St. Luke's for assault

Throwing in the towel nets felony charge

Frank A. Mohler, 49, of Homedale, faces a felony aggravated battery charge for throwing a bloodstained towel at a paramedic at St. Luke's Regional Medical Center in Boise on last Wednesday. This followed Mohler

informing those on the scene that he had a communicable disease. He also faces charges of public intoxication and possession of drug paraphernalia, both misdemeanors.

The incident reportedly started around 5:30 p.m. with Mohler disrupting and disturbing the emergency room at St. Luke's.

The Boise police said that witnesses described Mohler as appearing to be under the influence,

smelled heavily of alcohol, and had thrown a towel soaked in his own blood at one of the paramedics. The towel reportedly struck the paramedic in the stomach.

The suspect voluntarily told Boise Police officers that arrived at the scene that he has a communicable disease transmitted through bodily fluids. Police have said they would not release what the "communicable disease" was that Mohler told officers he had,

citing federal disclosure laws about medical records. St. Luke's did not release a statement, either.

After Mohler's statement, the paramedic then asked that Mohler be charged with felony aggravated battery, according to police reports. When police took the suspect into custody, a search revealed a marijuana pipe.



Frank Mohler

If found guilty of aggravated battery, Mohler could face a sentence of up to 15 years.

Mohler has another pair of misdemeanor assault charges, dating from 2006. He is slated to appear in court for trial on May 7 in Ada County on that earlier case.

# DEQ seeks public input on USEI permit change request

The Idaho Department of Environmental Quality has opened a 45-day comment period on a permit modification request by US Ecology Idaho Inc.

USEI wants to expand an existing landfill at its hazardous waste storage site near Grand View. According to a letter announcing the comment period, the DEQ is proposing to approve the permit modification request.

Concerned citizens have until 5 p.m. April 17 to submit written comments. Address them to Robert Bullock, c/o Jenny Shafer, Idaho Department of Environmental Quality, 1410 N. Hilton, Boise, ID 83706.

The draft modified permit, fact sheet and administrative record are available for review at the DEQ State Office, 1410 N. Hilton, Boise. The fact sheet and draft modified permit can be accessed online at [www.deq.idaho.gov/](http://www.deq.idaho.gov/). Or you can call Jenny Shafer at (208) 373-0502.



A US Ecology crew, in yellow, work to empty an overturned tanker on Highway 78 near Grand View in September of 2008.

Once the comment period is over, DEQ will review the data and either set a time and place for a hearing on the permit, revise the draft permit modifications or approve the draft permit modifications as proposed.

# Police ask for patience during U.S. 95 bridge repair project

Homedale Police chief Jeff Eidemiller asked drivers to be patient with the wait at the U.S. Highway 95 bridge construction.

Several vehicles have jumped the light on the one-lane bridge, he said, and extra patrols have been ordered to try to stop the potentially dangerous behavior.

"If people think the wait is long now ... if we have a head-on on the bridge it will shut down entry access to Homedale at this end to zero," Eidemiller said.

He also asked drivers to be mindful of the health and safety of workers on the bridge — workers who will be present until some time in May.

"We will be enforcing violations," he said in

relation to work-zone enhanced fines, which add an extra \$50 to any citation.

He compared the work to a trip to the dentist — something unpleasant at the time with a measurable payoff at the end of the process.

"I realize it's a long time to wait at a stoplight," Eidemiller said, "but the end justifies the means in this situation."

Whether or not the beginning of the shoulder work on U.S. Highway 95 — slated for the first part of April — will have an additional impact on the congestion at Homedale remains to be seen. Bridge and road projects will overlap for a week or more.

— MML

# Law enforcement briefs

**Owyhee County Sheriff**

Several arrests were made this week by the sheriff's office, including what appear to be two major incidents, though details are sketchy. A county drug dog was apparently dispatched to each of the two calls, though unofficial reports have described the amount of drugs — specifically marijuana — taken in the first instance was not large, approximately 10 grams.

An 11:34 a.m. arrest was made at 2694 Pioneer Road in Homedale on March 13, when five officers and several posse members — including Sheriff Daryl Crandall and Chief Deputy Bill Detweiler — served a search warrant. The dispatch log lists the nature of the call as a narcotics violation,

but no information was given as to who was arrested, or the specific charges. The sheriff's office referred all inquiries to the prosecutor's office, but those questions were not answered prior to deadline Monday.

Even more officers responded to another incident — this one at 10:27 a.m. on March 16 — where a search warrant was served. At least 15 officers and agencies, including Grand View Fire and Ambulance, were involved in the event. No names, charges or location — other than "Owyhee County" — were provided. The incident appears to also be drug-related, the nature of the call being



Michael King

listed as possession of paraphernalia. Crandall also responded to this incident.

**Fleeing Murphy man arrested in Nampa**

In a Wednesday release, the Owyhee County Sheriff's Office said that Michael King of Payette was arrested on March 14 after fleeing a domestic battery reported at 15195 Bates Road in Murphy. King was stopped in Nampa by the Idaho State Police at OCSO's request, Detweiler said. Following a field sobriety test, King was also charged with DUI. He is being held on a \$25,000 bond.

# Courts briefs

Arturo Malacara, Jr., 21, of Parma, was found guilty of misdemeanor battery and obstruction after an arrest in Homedale in January.

Malacara was sentenced to 90 days in jail (suspended), a year's probation and will pay \$200 in fines in Judge Dan C. Grober's

court last week.

Malacara was convicted of resisting arrest in March, 2007, of burglary and petty theft in 2006 — with one year of jail time suspended, and almost \$7,000 in restitution to be paid to 16 victims — and a conviction as a minor for grand theft in 2004.


## Correction

The Owyhee County Jail supervisor, Steve Menendez, was misidentified in the Board of County Commissioners meeting article in the March 25 edition of The Owyhee Avalanche.

# The Owyhee Avalanche

P.O. BOX 97 • HOMEDALE, ID 83628  
PHONE 208 / 337-4681 • FAX 208 / 337-4867  
[www.theowyheeavalanche.com](http://www.theowyheeavalanche.com)

U.S.P.S. NO. 416-340  
Copyright 2007—ISSN #8750-6823



Member

JOE E. AMAN, *publisher*  
E-mail: [joe@owyhee.com](mailto:joe@owyhee.com)  
JON P. BROWN, *managing editor*  
E-mail: [jon@owyheeavalanche.com](mailto:jon@owyheeavalanche.com)  
MICHAEL LANE, *reporter*  
[michael@owyheeavalanche.com](mailto:michael@owyheeavalanche.com)  
JENNIFER STUTHEIT, *office*  
E-mail: [jennifer@owyheeavalanche.com](mailto:jennifer@owyheeavalanche.com)  
ROBERT AMAN, *composition*  
E-mail: [rob@owyheeavalanche.com](mailto:rob@owyheeavalanche.com)

Published each week in Homedale, Idaho by Owyhee Avalanche, Inc. Entered as Periodical, paid at the Post Office at Homedale, ID under the Act of March 3, 1879. POSTMASTER: send address changes to THE OWYHEE AVALANCHE, P.O. 97, Homedale, ID 83628.

**Annual Subscription Rates:**

Owyhee County.....	\$31.80
Canyon, Ada, Malheur counties .....	37.10
Elsewhere in Idaho.....	42.40
Elsewhere (outside Idaho).....	40.00

**Deadlines**

<b>Classifieds</b>	<b>Display advertising</b>
Monday noon the week of publication	Friday noon the week prior to publication
<b>Legal notices</b>	<b>Inserts</b>
Friday noon the week prior to publication	Friday noon the week prior to publication
<b>Letters to the editor</b>	
Friday noon the week prior to publication (Limit 300 words, signed, with day phone number.)	

# The Owyhee Avalanche

Owyhee County's best source of local news!



# Probation workers could face changes

## Retention of unfunded probation officer skews department’s bottom line

Workers in the Owyhee County Probation Office face possible adjustments to their hours in order to meet budget requirements.

Chief probation officer Doris Jewett confirms that changes will have to be made after recent figures showed the department was four percent over its fiscal year 2009 salary budget through March 18.

“We will have to adjust our time and make sure we come in under the budgeted amount of money,” Jewett said without providing specifics.

The difficulty apparently has arisen after Jewett retained one of her probation officers after the Board of County Commissioners cut the position from the FY 2009 budget, which went into effect Oct. 1.

Between October and March 18, about 46 percent of the fiscal year, the half of the probation office’s salary budget had been spent, including \$8,037.75 for the probation officer position that wasn’t funded by the commissioners.

District 3 Commissioner Dick Freund, who was the board’s probation officer supervisor during budget workshops last year, said

that the commissioners decided to cut the probation officer position after a workload study showed it was unnecessary.

Freund said Jewett made the decision to cut the office’s ASSET (Alternative for Students Suspended, Expelled or Truant) school to save her second probation officer’s job. But the classroom stayed open until the second week of December, 2½ months into the new budget year.

“Doris chose to close the special school for at-risk kids to keep her employees on,” Freund said. “The budget lines will be askew because of the different lines she is using to pay that employee, which is fine as long as her total A budget (salaries) line doesn’t go over.”

With 54 percent of the budget year remaining as of March 18, there was \$11,764.56 remaining in the classroom coordinator salary budget, which is being used to pay the unfunded probation officer.

That’s less than 49 percent of the remaining salary, which means the line could wind up five percent over budget.

Additionally, the office had spent more than two-thirds of its

### Where Owyhee ASSET students have gone

Owyhee County Chief Probation Officer Doris Jewett reports the closure of the classroom has displaced students from both the ASSET (Alternative for Students Suspended, Expelled or Truant) program as well as local schools.

- In September, the classroom served 11 ASSET students and four students from local schools.
- In October, there were 13 ASSET students and 14 local schoolchildren.
- In November, 11 students from ASSET attended with 23 from local schools.
- In December, during which the school was open for only two weeks, there were seven ASSET students and three students from local schools.

Since the closure of the classroom inside the Homedale probation office, Jewett said the students have been dispersed into public schools after showing success in the ASSET program, or went to Boise State University to work on the GEDs. She added that some are no longer in any type of school.

custodial budget line (\$1,161.60) with more than half of the year remaining.

“That money was used to close out the ASSET space and move some things,” Jewett said. “The rest of the money (\$538.40) is available for janitorial supplies.”

Jewett said the bulk of the more than \$1,100 taken from the custodial budget was spent in one month.

The probation office’s bottom line received some good news last week when the Board of

County Commissioners ratified an amended building lease with Homedale landlord Peggy Jackson.

With the closure of the ASSET school eliminating part of the probation office’s footprint in its building at the corner of West Idaho Avenue and North 1<sup>st</sup> Street West, Jackson and commissioners struck a deal for monthly rent of \$650 per month. The rent for the first quarter of FY 2009, paid in one installment of \$3,650, figured out to more than \$1,200

per month.

The revised lease agreement will keep the probation office headquarters in Homedale at least through September, when the new fiscal year begins. The commissioners wanted to move the probation office to the county-owned annex building in Marsing.

Before the lease revision, moving the headquarters to Marsing would have saved the county \$14,400 in lease payments and would have reduced power and heating costs. It’s unknown how much the total savings would have been with a move to Marsing because a satellite office in Homedale was discussed to serve the bulk of juvenile and adult misdemeanor probationers who live in and around the county’s largest city.

The probation office possibly still could use Marsing as a satellite location for the remainder of the fiscal year. Jewett said one of her probation officers travels to the Bruneau-Grand View area about twice a month to handle the caseload in that part of the county.

Despite the projected payroll shortfall, Jewett said her budget is in good shape for about halfway through the year. She’s unsure if any more action will need to be taken to stay in the black for FY 2009.

— JPB

## Homedale reviews hiring; PD to do more walkthroughs

The Homedale city council held its regular meeting on Thursday. Business was carried through as normal, with no major surprises but several informative subjects were broached.

Hiring practices were brought up for consideration after the recent hiring of Mike Shenk by the city’s public works department. Councilman Eino Hendrickson expressed concern that the hiring had not been done in accordance with the city’s personnel handbook, which stipulates that hires be done with review and approval of the city council. In discussion, Mayor Harold Wilson and councilman Dave Downum reassured Hendrickson that, while quick, the procedure had had oversight. The mayor and councilman Aaron Tines brought up Idaho Counties Risk Management Program’s (ICRMP) assessment of the city’s handbook on hiring — specifically that the hiring process needs to be brought in line with other cities, where department heads, subject to the mayor’s approval, make the final hiring decisions to minimize possible political influence on professional hires. The council moved to explore making the changes, and City Clerk Alice Pegram informed the council that she was in the process of updating

the manual.

Homedale Police Chief Jeff Eidemiller gave his law enforcement report. Over the report period the department issued 40 citations, 22 of them infractions “including, believe it or not, an infraction at a traffic light” he said, in reference to Homedale’s first — and temporary — signal located at the U.S. Highway 95 bridge during construction. He said 18 misdemeanor citations were issued, seven of them involving alcohol; three DUIs and four minors in possession.

Alcohol was a focus for the chief at the meeting.

“On Fridays and Saturdays, the bars are packed,” he reported. “The handwriting is on the wall for more alcohol related offenses.” He credited the slowed economy for the increase in bar traffic.

“People are on edge. I fear for what it’s going to do to our little community,” Eidemiller said. His department is making efforts to have two officers on during the preferred drinking hours and do more bar walkthroughs despite manpower shortages, he said. That shortage will be addressed in part by the hiring of Steve Atkins, who is undergoing the hiring process now, and will attend the Idaho Peace Officer Training Academy as soon as approved,

Eidemiller said.

Head of public works Larry Bauer informed the council that a dedication of the new playground equipment to be installed at Sundance Park is planned on May 2.

Sylvia Bahem, Planning and Zoning administrator, informed the council that a revision of the Homedale sign ordinance was in the works, calling the current ordinances “vague and misleading”. Bahem is working with City Attorney Michael Duggan to rework the code, she said.

Bahem also encouraged the city to look at changing the designation of several lots within the city limits from industrial to either commercial or residential.

“If a house burnt down on one of these lots, you could build a bottling plant right there,” she said. She added that she had encountered problems property owners faced, who had approached lenders who “don’t want to touch” refinancing on a home on a property zoned industrial.

The council moved to hold a public meeting on the rezoning, as well as on an addendum to allow the construction of hangars on industrial use property — in order to allow the Homedale airport to add structures.

— MML

## City water makes grade as 7th well work looms

The long drawn-out process of adding another well to Homedale’s municipal water system continues to creep along.

More than a year after Stevens and Sons of Boise drilled a test well at Riverside Park, the same company signed a contract March 23 to finally drill the city’s seventh well.

The contract comes days after the city received its annual water report from the Idaho Department of Environmental Quality.

City public works supervisor Larry Bauer said last week that no violations were reported in the latest water quality report, which is available for inspection at City Hall.

The only blemish on the report was a detection of arsenic in the defunct Well No. 1. Bauer said the well, located near City Hall, hasn’t been used in at least four years. The well has been abandoned and capped, but its data still appears on the report for some time after the test date for arsenic, which was several years ago, Bauer said.

The report cover letter, authored by the city, also mentioned that the well project continues to trudge along.

Homedale has struggled to get state approval for every step of

the well project. Instead accepting engineering plans on the entire project, DEQ has been adamant to follow regulations that require step-by-step progress from test well to finished well.

The process is not the most efficient, Bauer admits, because the city has been unable to present all of its plans, which includes bringing an older well back online at Riverside and blended it with the well Stevens and Sons will be drilling as well as building a pump house.

Each phase of the project has required a separate permitting process.

Meanwhile, Bauer anticipates the city to put its sewer main project out to bid by May. The city awaits the completion of an expanded environmental study that had been required by U.S. Department of Agriculture Rural Development, Bauer said.

— JPB

Garage full?  
Sell it in the  
*Classifieds*  
337-4681



# Obituary

## Ardis Elizabeth Nash



Ardis Elizabeth Nash, age 72, died Saturday, March 28, 2009, surrounded by her entire family after a brief battle with cancer.

Ardis was born February 23, 1937, in San Diego, California. At the age of four months, she moved with her mother, Mildred, to Hood Canal, Washington, to live with her grandparents, John and Elizabeth Ryan. Mildred taught school in Port Orchard, coming home on the ferry on the weekends. The family moved to Seattle before Ardis entered school. Her grandmother died when Ardis was in the first grade; her mother worked at various jobs while her grandfather cared for her. When Ardis was in the sixth grade, she and her mother moved to Olympia, where Mildred taught in the high school. In 1949, Mildred married John Norton, a pharmacist, and the family moved to Missoula, Montana. Because Ardis knew no one that summer, she immersed herself in one of her favorite passions, reading. John and Mildred both got jobs in Bozeman, and Ardis started the eighth grade there. She fell in love with Bozeman and graduated from Gallatin County High School in 1954. Ardis also spent her college years in Bozeman, receiving her bachelor’s degree in secondary education from Montana State with a major in biology and a minor in English. She followed her parents to Idaho and started her teaching career at Nampa High School. She taught biology for two years, but found she much preferred teaching English.

Ardis met Rodger Nash in 1959, at a dance at Bicandi’s, a restaurant and bar in Homedale. They became engaged after dating three months and were married in Boise on June 5, 1960. They made their first home in Caldwell and welcomed daughter Valerie on May 18, 1961. Rodger ran the potato shed in Homedale in the summer; Ardis weighed sacks



so she could be with him. The following year, they moved to a small home on 13 acres just outside of Homedale. Rodger worked for the sugar beet company and Ardis began teaching at Homedale High School in 1963. Son Steven was born on April 15, 1964. Ardis continued teaching until she became pregnant with daughter Shannon, who was born on October 27, 1966. Ardis stayed home with her growing brood, and son Ryan joined the family on July 10, 1969. The Nashes had outgrown their little home and moved into town during the summer of 1970.

Ardis began teaching at Homedale High again in 1983. She also took classes at Boise State University, earning her master’s degree in 1990. For many years, Ardis was the advisor to the Writers’ Club and Wrestling Rallies. She retired in 2004.

Ardis’s greatest joy was following her grandchildren’s activities. She also loved to read, do crossword puzzles, and follow politics. She walked three miles every day faithfully until five weeks prior to her death.

Ardis was preceded in death by her parents and her grandson, Alex Stacey. She is survived by her husband of 48 years, Rodger, and her children and their spouses, Valerie and Steve Stacey, Steve and Leslie Nash, Shannon and Toby Johnson, and Ryan and Heidi Nash, all of Homedale. She is also survived by her grandchildren, Jonathan Stacey; Aubrey, Morgan, and Kendall Nash; Hannah, Nash, and Lainey Johnson; and Gabrielle, Victoria, and Sophia Nash.

A memorial service will be held at the Homedale High School gymnasium on Saturday, April 4, at 2:00 p.m. The family suggests that, in lieu of flowers, memorials be donated to the Homedale Friends Community Church building fund.

## Senior center hosts property tax reduction help workshop

Two visits from Owyhee County Assessor’s Office representatives highlight this month’s calendar at the Homedale Senior Citizens Center.

County reps will walk folks through applying for property tax reduction through the Circuit Breaker program in workshops today and next Wednesday. The assistance will be offered from 10 a.m. to noon and from 1 p.m. to 4 p.m. each day.

On Saturday, the monthly dance will be held with live music from 6 p.m. to 10 p.m. Admission is \$4, and attendees are asked to bring finger food.

The monthly foot clinic will be held at 8 a.m. on April 21. Appointments are necessary and can be placed by calling the senior center at 337-3020.

On April 13, the senior citizens van will be available for a shopping trip. Call the center to reserve a seat.

## HHS grad begins U.S. Navy basic

Katie L. Johnson, sworn into active duty for the U.S. Navy, left for basic training on Wednesday, March 25.

A 2004 Homedale High School graduate, Johnson is the daughter of Jim and Glenda Johnson and the granddaughter of Vernon and Bernice Drain of Homedale and JoAn Breach of Caldwell.



Katie Johnson

Johnson will train in the field of Aviation Electronics in the Navy. Before joining the military, she was employed at US Bank for two years, first as a teller then as a loan officer, and then she worked at the Sandbar Restaurant while attending Boise State University.

## MHS teacher nabs \$750 grant

Capital Educators Federal Credit Union (CapEd), awarded its March Teacher of the Month \$750 teacher grant for small schools to John Lindley of Marsing High School on Tuesday.

Two Teacher of the Month winners are selected from grant applications submitted from teachers within CapEd’s field of membership area, which includes the fifteen Idaho counties.

The award ceremony occurred after Monday’s deadline, but results will be posted online at [www.owyheeavalanche.com](http://www.owyheeavalanche.com) and appear in next week’s edition.

# School menus

### Homedale Elementary

- April 1: Chicken nuggets or finger steaks, broccoli, fruit & veggie bar, cinnamon roll, milk.
- April 2: Turkey noodles or tuna sandwich, peas, fruit & veggie bar, goldfish crackers, milk.
- April 3: Pizza or popcorn chicken, salad, fruit & veggie bar, cookie, milk.
- April 6: Hamburger or fish sandwich, potato wedges, fruit & veggie bar, cookie, milk.
- April 7: Chicken tenders or country fried beef steak, mashed potatoes/gravy, roll, fruit & veggie bar, milk.

### Homedale Middle

- April 1: Enchilada or chicken & noodles, corn, fruit & veggie bar, turnover, milk.
- April 2: Lasagna or pizza hot pocket, green beans, fruit & veggie bar, bread sick, milk.
- April 3: Pizza or popcorn chicken, salad, fruit & veggie bar, cookie, milk.
- April 6: Chicken patty or rib-b-que, fruit & veggie bar, cookie, milk.
- April 7: Fish nuggets or mini corn dogs, rice, fruit & veggie bar, brownie, milk.

### Homedale High

- April 1: Lasagna, burrito or pizza hot pocket, French bread, fruit & veggie bar, milk.
- April 2: Chicken patty or hamburger, potato wedges, fruit & veggie bar, sherbet cup, milk.
- April 3: Chicken taco or French dip sandwich, corn, fruit & veggie bar, milk.
- April 6: Pizza, nachos or chef salad, fruit & veggie bar, cookie, milk.
- April 7: Chicken nuggets or egg rolls, rice pilaf, green beans, fortune cookie, fruit & veggie bar, milk.

### Marsing

- April 1: Waffles/syrup, scrambled eggs, ham, strawberries, sandwiches, salad & fruit bar, milk.
- April 2: Chicken burger, veggie, sub sandwich, salad & fruit bar, milk.
- April 3: Enchilada, rice, garden salad, chicken fajita, salad & fruit bar, milk.
- April 6: Burrito, rice, apple crisp, hamburger, salad & fruit bar, milk.
- April 7: Pizza, garden salad, cookie, Chinese egg rolls, salad & fruit bar, milk.

### Bruneau

- April 1: Lasagna, salad/croutons, fruit, bread sticks, milk.
- April 2: Turkey sandwich, fries, veggie, fruit, cookie, milk.
- April 3: Cheese yum, potato soup, fruit, cinnamon twists, milk.
- April 6: Hamburger, potato wedges, fruit, veggie, cookie, milk.
- April 7: Chicken fried steak, potatoes/gravy, salad, fruited jello, roll/butter, milk.

# Death notice

**SHIRLEY MAY FUCHS**, 59, of Murphy, passed away Friday, March 20, 2009, at her home. A celebration of her life will be held at 2 p.m., Wednesday, March

25, 2009, at the Owyhee County Historical Museum, 17085 Basey St. in Murphy. Arrangements provided by the Zeyer Funeral Chapel in Nampa. 467-7300

## River Haven R.V. Park

Quiet Country Atmosphere

2 Miles South of Marsing  
6920 Old Bruneau Highway • Marsing Idaho, 83639

- Fishing in the Snake River
- Full Hook-Ups
- Spaces Available
- Picnic/Park Area

- Daily/Weekly/Monthly Rates
- Small Pets on Leashes Allowed

### Open to Public:

### Full Line Laundromat (\$1 wash • 75¢ dry)

### Propane (\$2.50 gal)

### Call: 896-4268



# Calendar

Today

**DivorceCare recovery support group**  
7 p.m., Mountain View Church of the Nazarene,  
26515 Ustick Road, Wilder. (208) 337-3151

Thursday

**Exercise class**  
10:45 a.m., free, Homedale Senior Citizens  
Center, 224 W. Idaho Ave. (208) 337-3020  
**TOPS (Take Off Pounds Sensibly)**  
5 p.m. weigh-in, 7 p.m. meeting, First Presbyterian  
Church, 320 N. 6<sup>th</sup> St., Homedale. (208) 482-  
6893  
**AA meeting**  
8 p.m., Homedale Senior Citizens Center, 224  
W. Idaho Ave.  
**Homedale Rod and Gun Club meeting**  
7 p.m., Owyhee Lanes Restaurant, 18 N. 1<sup>st</sup> St. E.,  
Homedale. (208) 463-4383

Friday

**Celebrate Recovery 12-step program**  
6 p.m., Mountain View Church of the Nazarene,  
26515 Ustick Road, Wilder. (208) 337-3520 or  
(208) 337-3151

Monday

**Owyhee County Board of Commissioners  
meeting**  
Courtroom 2, Owyhee County Courthouse, 20381  
State Hwy. 78, Murphy

Tuesday

**Exercise class**  
10:45 a.m., free, Homedale Senior Citizens  
Center, 224 W. Idaho Ave. (208) 337-3020  
**AA meeting**  
8 p.m., Homedale Senior Citizens Center, 224  
W. Idaho Ave.  
**Marsing PTA meeting**  
7 p.m., Marsing High School Commons Room,  
208 S. 8<sup>th</sup> Ave. W., Marsing. (208) 896-4273  
**Ridgeview Irrigation District board meeting**  
7 p.m., 118 S. 1<sup>st</sup> St. W., Homedale  
**Gem Irrigation District board meeting**  
7:15 p.m., 118 S. 1<sup>st</sup> St. W., Homedale  
**South Board of Control board meeting**  
7:30 p.m., 118 S. 1<sup>st</sup> St. W., Homedale

Wednesday

**DivorceCare recovery support group**  
7 p.m., Mountain View Church of the Nazarene,  
26515 Ustick Road, Wilder. (208) 337-3151

*You can find a comprehensive listing of local  
events online at [www.theowyheeavalanche.com](http://www.theowyheeavalanche.com).  
Submit information on upcoming events to The  
Owyhee Avalanche by noon Fridays. Drop off press  
releases at the Avalanche office at 19 E. Idaho Ave.,  
Homedale, mail them to P.O. Box 97, Homedale, ID  
83628, fax them to (208) 337-4867 or e-mail them  
to [jon@owyheeavalanche.com](mailto:jon@owyheeavalanche.com) (an e-mail link also  
is available on our Web site). For more information  
on submissions, call (208) 337-4681.*



## Bet You Didn't Know

# Light is heavier, and a pencil goes a long way

I'll bet you didn't know this ... if you had a set of scales and fixed them so that one was in the dark and the other one in the sunlight. The one exposed to the sunlight will slowly sink, as it is "heavier." Pressure from sunlight is calculated as two pounds per square mile on the Earth's surface.

You might recall that Thomas Jefferson was an inventor as well as President. He invented a tool called the moldboard plow in the late 1700s. Busy fellow, that Thomas.

You can draw a line more than 35 miles with the average lead pencil. This same pencil will let you write more than 50,000 words in English. Course, you have to

sharpen it from time to time.

You think you've got rain problems? Try living in Calama, which is close to the Atacama Desert in Chile. Never has rained there.

Next time you go outside and you get bit by a mosquito remember this ... a mosquito has 47 teeth.

Jobs you may want to check into ... there are more professional tea tasters in the world than there are wine tasters. You'd better like tea if you were going to apply.

— For more information on Peary Perry or to read more of his writings or to make a comment, visit [www.pearyperry.com](http://www.pearyperry.com)

# Wilson Butte 4-H Ride saddles up

The 6th Annual Cowboy Trail Ride and Fun Run will be held Thursday, April 26 at the Blackstock Ranch, off Idaho Highway 78 on Opaline road between Givens Hot Springs and Marsing, with registration beginnings at 9:30 a.m.

Cowpokes can hit the trail until 11 a.m. with the ride planned at 2 to 2 ½ hours around the marked course. Cowboys and cowgirls are invited to bring their horse, and ride at their own pace. Organizers hope riders will enjoy the ride and the challenge of completing the course.

The route includes obstacles such as a bridge, hills, logs, animals, pipe, creek crossings and things riders could encounter on a trail. The ride thus gives both horses and riders a good opportunity to see how each handles common situations.

If the horse or rider is not comfortable with the situation, the release said the rider could pass any given obstacle, as they are not required for a completion. During the ride, entrants will also draw for "wild west cards" for the chance to win three top prizes.

The 4Hers are looking forward to this, the sixth annual ride.

"It's an awesome feeling to see the thrill on peoples faces as

they ride the course," the release stated. "We're excited. We had 157 riders last year."

When cowpokes return to camp, they'll find a lunch with buckaroo beans, cow chip cookies, and country harmony with the Dan Sevy Band. There will also be a "best dressed little buckaroo contest", open to those 9 and under.

The cost for the ride, lunch and entertainment is \$12.50, which helps fund Wilson Butte 4-H club activities.

For those who are cowboys at heart, but who don't have a horse, the club extended an invitation and said they "are welcome to join us to swap stories around the camp fire and enjoy the fixings at \$5."

Club members are selling tickets for quilts, a western entrance cabinet, and two chances of winning a half of pork, cut and wrapped. There will also be numerous donated items drawn every 15 minutes.

The club's Web expert, Megan Volker, has set up a ride site at <http://cowboytrailride.blogspot.com>.

Those seeking more information may visit the site or call the Wilson Butte trail boss Mary Blackstock at 896-4512 or 467-4250.

# Speaker to address students, adults

Howard Manwaring will be at Homedale High School throughout the day Monday, April 6, lecturing and meeting with classes on energy drinks and similarly-packaged alcoholic beverages, as well as on drugs, gangs and other issues effecting

students.

At 6 p.m. he will hold a talk for parents at the Homedale High School gym, addressing the challenges faced by children and the importance of parental involvement — including the adolescent years, during which

children become more independent and distant.

Parents unable to attend the evening meeting are invited to the 9:55 a.m. assembly, instead.

Manwaring's presentation is funded by the Safe and Drug Free Schools grant.



## Legion Bean Feed serves up for State

Those attending the 67<sup>th</sup> annual American Legion Bean Feed in Homedale on March 18 helped raise money to send boys to this year's Boys State event at Northwest Nazarene University on June 13. First Vice Commander of the post Robert Keaveny (left) said that applications were still being reviewed so finalists' names weren't yet available.

Read all about it

in

The Owyhee Avalanche

337-4681



ADVERTISING

YOUR AD HERE!  
\$10.00 PER WEEK

OWYHEE  
AVALANCHE  
337-4681

ELECTRICIAN

H&H ELECTRIC

Serving Owyhee  
County for 25 years

Jeff Haylett

337-8018

Contractor License# 23189

Electrical Contractor - State of Idaho

SAND & GRAVEL

Owyhee Sand,  
Gravel & Concrete

337-5057

Bill 573-2341 • Ray 573-2339

HOMEDALE, IDAHO

ALL TYPES OF ROCK & DIRT

STATE CERTIFIED DRAIN ROCK

FREE ESTIMATES ON ROADS & DRIVEWAYS

Chuck, Ray & Bill Maxwell

AUTO REPAIR

Jim's Automotive

Wheel Alignment • Suspension Work  
Brakes • Engine Diagnostics • Clutches  
Transmission Service • Lube, Oil Change  
Tune-Ups

25 Years Experience

Please call for Quotes & Appointments

989-3739 • 453-1485

email: beretta682x@aol.com

Jim R. Milburn

17465 Lewis Lane • Caldwell, Idaho

ASE Certified Foreign & Domestic

SPRINKLERS

LANDSCAPE CONTRACTORS

• SPRINKLER SYSTEMS • FENCING  
• WATER FEATURES • PATIO PAVERS  
• FINE GRADING • RETAINING WALLS  
• PLANTING

Kenny Elumbaugh, Owner

Wilder, Id • RCE# 22727

(208) 482-9948 OFFICE • (208) 921-0714 CELL

CARPENTRY

WE WELCOME  
YOUR BUSINESS!

CALL FOR FREE ESTIMATES.  
NO JOB TOO SMALL.

BOB PAASCH 482-7204

BOB'S CARPENTRY • WILDER

Idaho Lic # RCT-12463

HEATING & COOLING

RESIDENTIAL & COMMERCIAL  
NEW CONSTRUCTION • REMODELS  
HEATING & COOLING  
SERVICE • SALES • REPAIR

CALL 573-1788

Se Habla Español - 899-3428

FINANCING AVAILABLE O.A.C.

LANDSCAPING

Kelly Landscaping

GREG KELLY - OWNER

Sprinkler System - Lawn Mowing  
Installation, Maintenance & Blow-Outs  
Backhoe Services • Sod

Concrete Curbs • Rock Entryways

FREE ESTIMATES

Office - (208) 402-4346

Cell - (208) 919-3364

Idaho License # RCT-14906

STEEL BUILDINGS

STEEL BUILDINGS

Since 1969

Equipment Storage • Hay Shed • Shop  
Barn • Arena • Hangar

Phone: 1 (866) 454-1800

Fax: 1 (866) 454-1801

www.rmsteel.com

20595 Farmway Road

Caldwell, ID

SIDING CONTRACTORS

MGM  
Siding Contractors

William T. Bruce

1024 W. Finch Dr.

Nampa • 465-0214 • Fax 465-9831

ICB# RCE-300 • OCCB# 164231

Vinyl, Steel & Aluminum Siding

Vinyl Windows

Craftsmanship You can Trust

ADVERTISING

YOUR AD HERE!  
\$10.00 PER WEEK

OWYHEE  
AVALANCHE  
337-4681

CHIROPRACTIC

Marsing Chiropractic

P. O. Box 252, Marsing, ID 83639

Office: (208) 896-5520

\*\*\*Now accepting Blue Cross/Blue Shield insurance\*\*\*

\*\*\*Now accepting and treating Medicaid patients\*\*\*

\*\*\*Walkin patients are always welcome\*\*\*

\*\*\*Expanded hours of 9 to 5 Mon. thru Fri.\*\*\*

CHIROPRACTIC

Marsing Chiropractic

P. O. Box 252, Marsing, ID 83639

Office: (208) 896-5520

\*\*\*Now accepting Blue Cross/Blue Shield insurance\*\*\*

\*\*\*Now accepting and treating Medicaid patients\*\*\*

\*\*\*Walkin patients are always welcome\*\*\*

\*\*\*Expanded hours of 9 to 5 Mon. thru Fri.\*\*\*

PLUMBING & DRAIN CLEANING

Affordable Rooter

Quality Service You Can Afford!

WHY CALL US FIRST?

• Fast Right The First Time

• Clean, Professional Technicians

• Expert Drain/Cleanouts

• Same Day Service

• Sewer, Water, Toilet, Sinks, Drains

• Complete Plumbing Repairs

• 24 HOUR EMERGENCY SERVICE

ANY CALLING \$89.50

Locally Owned and Operated

208-475-0414

CHIROPRACTIC

HOMEDALE CHIROPRACTIC CENTER

J. Edward Perkins, Jr. D.C.

111 S. Main - Homedale - 337-4900

Your Pain and Wellness Clinic

• Low Back Pain • Carpal Tunnel Syndrome  
• Leg Pain • Whiplash/ Car Accident Injuries  
• Neck Pain • Work Injuries  
• Headache Pain • Sports Injuries  
• Shoulder Pain • Custom Orthotics (Shoe inserts)

Call 208/337-4900 for a Free Consultation

CHIROPRACTIC

HOMEDALE CHIROPRACTIC CENTER

J. Edward Perkins, Jr. D.C.

111 S. Main - Homedale - 337-4900

Your Pain and Wellness Clinic

• Low Back Pain • Carpal Tunnel Syndrome  
• Leg Pain • Whiplash/ Car Accident Injuries  
• Neck Pain • Work Injuries  
• Headache Pain • Sports Injuries  
• Shoulder Pain • Custom Orthotics (Shoe inserts)

Call 208/337-4900 for a Free Consultation

HEALTH SERVICES

Homedale Clinic

Terry Reilly Health Services

Richard Ernest, CRNP

Family Nurse Practitioner

108 E. Idaho, Box 1058

Homedale, Idaho 83628

337-3189, Night 466-7869

Mon., Wed., Thurs. & Fri. 8:30 - 5:00

Tuesday 8:30 am - 9:00 pm

HEALTH SERVICES

Marsing Clinic

Terry Reilly Health Services

Faith Peterson, CRNP

Family Nurse Practitioner

Rebecca Ratcliff, MD

201 Main Street, Marsing, Id. 83639

896-4159, Night 466-7869

Mon., Tues., Wed., & Fri. 8:00 - 5:00

Thursday 8:00 am - 9:00 pm

DENTAL SERVICES

Homedale Dental

Terry Reilly Health Services

Eight 2nd Street West,  
Homedale, Idaho 83628

337-6101

Jim Neerings, DDS

Monday - Thursday 7:30-1:30/2:00-6:00

Accepting Emergency Walk-Ins Daily

WELDING/FABRICATION

UNIK

QUALITY UPGRADES, LLC

Jose Siordia

Owner / Master Welder

(208) 794-8215 or 695-6172

CUSTOM PARTS/REPAIRS ON:  
Horse, Stock & Utility Trailers,  
Hayracks, Ladders, etc.

ALUMINUM & STEEL WELDING

CONCRETE

Ray Jensen Concrete  
Construction

29 Years Experience

Commercial and Residential

Specializing in Curb and Gutter

ALSO: Foundations, Walls, Sidewalks, Steps,  
Colored and Stamped Patios, Driveways, and Irrigation

Call # 899-9502 Home # 482-7757

Fax # 482-6275

ICR License # RCT-89 CCB License # 168475

29544 Peckham Road, Wilder, Idaho 83676

ADVERTISING

YOUR AD HERE!  
\$10.00 PER WEEK

OWYHEE  
AVALANCHE  
337-4681

ADVERTISING

YOUR AD HERE!  
\$10.00 PER WEEK

OWYHEE  
AVALANCHE  
337-4681

ADVERTISING

YOUR AD HERE!  
\$10.00 PER WEEK

OWYHEE  
AVALANCHE  
337-4681

ADVERTISING

YOUR AD HERE!  
\$10.00 PER WEEK

OWYHEE  
AVALANCHE  
337-4681

ADVERTISING

YOUR AD HERE!  
\$10.00 PER WEEK

OWYHEE  
AVALANCHE  
337-4681

REAL ESTATE/PROPERTY MGT.

Agate  
CREEK

Real Estate Services

www.agatecreek.com

Real Estate Sales  
Property Management

Maureen Jackson

208-880-7430

maureenj@agatecreek.com

STEEL ROOFING & SIDING

R & M STEEL COMPANY

Since 1969

Factory Direct  
Made to Order

Equipment Storage • Hay Shed • Shop  
Barn • Arena • Hangar

Phone: 1 (866) 454-1800

Fax: 1 (866) 454-1801

www.rmsteel.com

20595 Farmway Road

Caldwell, ID

STEEL ROOFING & SIDING

R & M STEEL COMPANY

Since 1969

Factory Direct  
Made to Order

Equipment Storage • Hay Shed • Shop  
Barn • Arena • Hangar

Phone: 1 (866) 454-1800

Fax: 1 (866) 454-1801

www.rmsteel.com

20595 Farmway Road

Caldwell, ID

The Owyhee Avalanche

Your source for Owyhee County  
news and views since 1865

Phone (208) 337-4681

P.O. Box 97, Homedale, ID 83628

www.theowyheecavalanche.com



# BOCC looks for input on Natural Resources Plan

Draft marked for revision available for review online

The Owyhee County Natural Resources Plan revision is not a done deal after all.

One week after approving the new version of a document originally adopted 12 years ago, the Board of County Commissioners declined to follow through with plans to memorialize it with a resolution during the March 23 meeting.

Questions originally raised about the plan's language regarding the Bureau of Land Management's role in county law enforcement led to a lengthy discussion via phone with Owyhee County Natural Resources Committee director Jim Desmond. The conversation revealed that more than one version of the plan is in existence because of several revisions over the years, and that may have led to confusion. The current revision has been in the works for nearly two years.

The commissioners tabled action on the resolution until Tues-

day's board meeting in Murphy. There was no meeting this week.

District 3 Commissioner Dick Freund originally scrutinized language in the plan that he thought could muddy the waters on what BLM rangers could and could not do to enforce laws in the county.

"That's what the concerns of the public are out there," Board chair Jerry Hoagland said. "That the BLM will be able to overstep its bounds with the language the way it is."

The language establishing the Owyhee County Sheriff as the law enforcement authority in the county was written into the original 1997 plan because of turf disputes between the federal agency and the sheriff's office.

And the commissioners don't want to take the chance of a relapse.

"We didn't want any reference that they may possibly do that. Even though it's not as big of a concern as it was back then, that language still needs to be in there," Hoagland said.

The county politicians aren't the only ones who view that the language could threaten sovereignty of the county sheriff's of-

fice, something for which former Sheriff Gary Aman battled against BLM in the early days of his administration.

"Citizens are worried about that," Hoagland said.

The District 1 commissioner was confronted by one person on the topic during a Jordan Valley Cooperative Weed Management Area meeting on the evening of March 23, and Hoagland said the bulk of concerns over revised documents seem to stem from that area of the county.

Copies of the document are available for review in Jordan Valley as well as online on the county Web site at [www.owyhee-county.net](http://www.owyhee-county.net).

The board chair said the decision to hold off on the resolution was delayed until the afternoon session of last week's meeting to get clarification on whether a new round of full public comment would be necessary. With county Prosecuting Attorney Douglas Emery out of town for conferences, the board consulted an attorney from the Idaho Counties Risk Management Program (ICRMP), who advised that tweaks to the plan could be done with a reso-

lution. Large-scale alterations, however, will require re-opening the public hearing process.

Hoagland voiced disappointment in the amount of public involvement during the most recent revision.

"The latest version cleans up the document and makes it more user-friendly, I hope," he said. "There was a lot of (information) in the document that the public didn't know about, and I was a little disappointed."

With the change of presidential administrations, county folks also fear that an influx of new personnel in local BLM offices will change the dynamic. Hoagland said it has taken years to build up the level of cooperation and understanding with the current BLM administrators.

"The purpose of some of the language is there to keep the relationship with the BLM," he said. "We have this we can fall back on and say, 'Wait a minute, this is the way the county thinks (BLM rangers should proceed) out there on those lands.'"

The Natural Resources Plan is a vital companion to the recently signed Owyhee Initiative law.

And the plan's importance goes beyond law enforcement. It also helps keep the BLM and ranchers in line when it comes to multiple use of public lands and goes a long way toward establishing a policy to protect the resources against damage from recreational users.

"We want to protect the resources that are there for everyone's enjoyment," Hoagland said. "We don't want it to get out of hand. We want to try to get some reasonable management of those things."

Hoagland points out, however, that the Natural Resources Plan and similar plans aren't hammers to be used to shape the BLM's actions to the liking of the county.

"These plans recognize the fact that there are federal laws and regulations in place," Hoagland said. "The county is recognizing those and including those in our plans."

"The difference between the agencies and the county is the interpretation of the regulations. In the plan, we try to point out our interpretations in plain English."

— JPB

# With Initiative law, travel plan may go back to beginning

After nearly two years, the proposed Murphy Sub-Region Travel Management Plan (TMP) may have become obsolete with the stroke of a presidential pen.

And, the frustrating part for some is, the federal government knew that plan and other similar travel plans in Owyhee County would become meaningless if the Owyhee Initiative became law, which it did Monday.

"We tried to tell (Bureau of Land Management officials) that I don't know how many years ago," Initiative Work Group chair Fred Kelly Grant said. "I repeatedly asked them, 'Are you doing anything now that you're going to have to re-do when the Initiative passes?'"

Turns out that may be the case.

During its March 23 meeting, the Board of County Commissioners tabled a decision to rescind a 2008 resolution accepting the TMP and accept a revised plan. They are scheduled to revisit the issue Tuesday when the board meets for the first time under its new meeting protocol.

Board chair Jerry Hoagland said BLM officials were anxious to get the county's decision on the plan, which would map hundreds

of miles of trails for recreational and administrative use.

But the commissioners had concerns that several grazing allotment permittees haven't had an opportunity to give share their input with the BLM on areas that would affect their operations.

"There are quite a few permittees that haven't been approached yet to see if they'll approve of this or not," Hoagland said.

But with the Initiative becoming law, the sub-region plans will have to be melded into one document covering all Owyhee Front trails used by recreationists, BLM officials and ranchers. The federal agency has a few years to get those plans together under the Initiative mandate.

"They should back up and take a complete look now at the whole Front, and not just try to rush through on that sub-basin," Grant said.

The county hopes to reduce the number of public trails from the current 1,200 miles to about 450, Hoagland said. The BLM wants the number closer to 850 miles.

Hoagland acknowledges the validity of Grant's point, but stresses that the more time passes the more time the irresponsible faction of recreationists will have



With the passage of the Owyhee Initiative, other agency plans will have to fall into line.

to create new trails that could encroach on allotments, BLM study areas and private property.

"It seems so foolish to rush ahead right now knowing that (the Initiative) is going to happen," Hoagland said.

"But at the same time, we have our citizens as well as me concerned about the expansion that's going on right now because it's to the detriment of our land," Hoagland said.

Irresponsible recreational use of Owyhee's public lands is creating hundreds of new, unmapped trails each year, he said.

And there always is the matter of recreationists destroying permittee improvements, scaring grazing cattle to far stretches of allotments and damaging species habitat by barreling across country.

Hoagland also points out, as have several officials over the years, that most of these recreationists don't give anything back to the county in the way of resources to battle the problem. Very few consumer dollars are spent in Owyhee County as ATV riders and others come in from other areas of the Treasure Valley with supplies in tow rather than visiting places like Snake River Mart in Marsing, the Murphy General Store and stores in Grand View.

"Everything is brought over the river into the county," Hoagland said.

— JPB

*"The Gift of Health this Easter Season!"*

**Canned Sunnyslope Peach Halves**

*12 Large 28 oz. cans per case or 1/2 cases available*

**Robison Fruit Ranch**

Sunny Slope • 459-7987

**ENTER LAST CHANCE SALOON'S KARAOKE CONTEST!**

**APRIL 4, 11 & 18 - CONTEST NIGHTS**

**APRIL 25 - FINALS!**

**\$5.00 Entry**

**per person / per night.**

**Contest hours:**

**8:30 pm - 12:30 am**

**Winings split**

**50/30/20 on April 25**

**LAST CHANCE SALOON • HOMEDALE**



# Teacher salary cuts may be illegal to implement

The Joint Finance-Appropriations Committee (JFAC) met to set budgets for public schools on Friday morning. Despite concerns and fears voiced by some members, JFAC issued its budget, complete with a one-year freeze on automatic pay raises guaranteed in contracts and a 2.63 percent cut in funding for teachers and classified staff — which may not be legally possible for Owyhee County school districts.

The decision was not what Marsing School District superintendent Harold Shockley wanted to hear, but he wasn't surprised.

"It was kind of a mixed bag," he said. "I don't like the way it turned out, but it could have turned out a lot worse. At the local level, we're going to have to come up with some dollars out of our hide."

The budget includes a five percent cut in state funding to school districts for public school administrators, as well. School districts, rather than the Legislature, set actual salaries, and this decision will leave administrators and school boards deciding who and how to cut.

In the case of Marsing and Homedale, and in the case of similar small schools, boards and superintendents may find



Harold Shockley

(JFAC) made the point that they were strictly setting reimbursement rates — we have to figure out where to cut," Shockley noted.

But did the board give schools the freedom needed to implement such cuts?

"No," Shockley said. "Basically, in order to do a lot of the things they're touting you can do, we have to declare a financial emergency — but under the first blush we won't be able to qualify to file for financial emergency, so that takes away the latitude to reduce salaries."

Schools can only declare a financial emergency when their reserve funds reach or drop below 5.5 percent of their operating costs, Homedale School District superintendent Tim Rosandick said.

Rosandick said that, because of good management, Homedale's rainy-day nest egg is large enough

their hands tied. JFAC's decision could mean cutting not salaries, but the discretionary fund, maintenance and other monies.

"The statute still remains that without that (financial emergency status) we cannot pay less than we paid last year. We will just be funded less than we were last year," Shockley said.

"It looks like funding for teachers has been cut 2.6 percent," he said. "We have to figure out where we come up with the money. Even if my staff came in and said 'We will voluntarily take this amount of a cut', I can't do it."

At this point, Shockley said, the "use it or lose it" funding system doesn't appear to allow for savings, even if a school chose to hire fewer teachers. Funds that aren't spent in salary are not transferable to other programs, so hiring one less teacher simply means that the salary saved returns to the state.

"If you don't have the teachers, you don't get the money," he said.

Even if a school dropped teachers in a reduction in force (RIF) plan, "you would still

lose the money for them," he confirmed.

While discretionary funds are to be held static at about \$25,000 per unit, according to JFAC and Shockley, shortfalls there are to be maintained by lottery money that once helped pay for maintenance. Shifting money to the discretionary fund leaves yet another budget hole.

"They're saying we've given you the tools if—but it's a big if," Shockley said. Many schools may have to find other places to cut money they largely don't have.

"We won't be able to do everything in one place. It'll have to be spread around," he said of the as-yet undecided cuts.

## JFAC votes party line

JFAC co-chair Dean Cameron (R-Rupert) outlined the issue as he saw it at the meeting Friday.

"Nobody in this room put us in this situation," he said. "This situation was brought to us by the economy."

State Senator Nicole LeFavour (D-Boise), did point to previous school funding decisions as leading to the current crisis.

"We've made our schools live so close to the bone that when we got here today, we are, in essence, breaking our public school system," she said as the

substitute motion came up for a vote.

As a part of the budgeting cuts, \$20 million has been shifted from education to the general fund as part of the motion — that \$20 million is expected to be replaced with stimulus funds but, as Clifford Bayer (R-Boise) pointed out, the details of the exact nature of that process are vague.

"There is a global unknown in regard to the stimulus dollars," he said.

LeFavour called the \$20 million shift "irresponsible" in light of the uncertain nature of stimulus funds, while Cameron downplayed the worry, saying that there was very little difference in paying from the stimulus package or the general fund, saying the budget would in effect, be withdrawing from "checking or savings" accounts — pulling from a single source.

As passed, the measure means the state would use \$60 million in stimulus money in the 2010 budget, and would leave the \$114 million in the Public Education Stabilization Fund untouched, saving it against further difficulties in 2011, should the economy remain depressed.

The measure passed 15-4 on party lines.

— MML

# Bruneau-Grand View seeks help to find disabled students

## Child Find targets special needs children not part of school system

The Bruneau-Grand View Joint School District would like to contact parents of children ages 3 to 21 who are not part of the public school system. Children with physical or mental disabilities not enrolled can find education options through the program.

The district operates the Child

Find service throughout the year, with activities designed to create public awareness of special education programs, to advise the public on the rights of students and to alert the community of the need to identify and serve children with disabilities.

Readers who know of a

child with needs arising from a disability, who is not enrolled in a school program, can call special education administrator Penny Hines at 834-2775 or the school district at 834-2253.

Those involved in a community agency or civic group that would like more information about educating children with disabilities may contact their local school office or Child Find at the numbers above.

# Special Occasions

PRIVATE PARTIES • BIRTHDAYS  
RETIREMENT • ANNIVERSARY • WEDDING  
HOLIDAYS • BUSINESS MEETINGS

## The Orchard House

RESTAURANT

14949 SUNNY SLOPE ROAD • HWY 55 BETWEEN MARSING & NAMPA  
BREAKFAST AND LUNCH: WED-SUN 7AM-2:30PM • DINNER: FRI-SAT 5-9PM

THE ORCHARD HOUSE  
WOULD LIKE TO HELP  
MAKE YOUR NEXT  
GATHERING  
EXTRA SPECIAL!

RESERVE A TABLE OR  
RESERVE OUR ENTIRE  
RESTAURANT.  
GIVE US A CALL!

459-8200

## Water report

The Bureau of Reclamation Web site showed that the Owyhee Reservoir was 49 percent full and that water was flowing in the Owyhee River above the reservoir at Rome, Ore., at a rate of 1,397 cubic feet per second. Water is flowing out at Nyssa, Ore. at a rate of 29 cubic feet per second. The reservoir held 346,834 acre-feet of water on Monday.

The following statistics were gathered from the National Resources Conservation Service Web site at 8:30 a.m. Monday (Year-to-date precipitation is measured from Oct. 1 to Sept. 30.)

### SNOTEL report, Owyhee County sensors

	Snow Equiv.	Snow Depth	Year-to-date Precip.	Previous day's temperature		
		(measured in inches)		Max	Min	Avg
				(measured in Fahrenheit)		
<b>Mud Flat</b>						
03/24	3.7	9.6	8.6	43.2	21.7	32.2
03/25	3.6	8.8	8.6	44.8	29.8	36.5
03/26	3.8	10.6	8.8	38.1	27.0	34.3
03/27	3.8	9.9	8.8	41.2	21.0	30.2
03/28	3.9	8.6	8.9	50.4	18.9	35.8
03/29	3.3	6.6	8.9	59.4	30.7	45.0
03/30	3.0	8.0	8.9	42.4	23.4	29.5
<b>Reynolds Creek</b>						
No report - remote site offline						
<b>South Mountain</b>						
03/24	12.6	30.7	21.1	37.9	16.9	26.2
03/25	12.9	31.5	21.4	38.7	25.9	30.7
03/26	13.2	38.0	22.0	32.2	20.8	28.4
03/27	13.2	36.5	22.0	37.6	17.2	25.3
03/28	13.4	34.3	22.2	44.8	23.7	34.0
03/29	13.5	32.0	22.3	50.0	28.4	40.8
03/30	13.6	33.6	22.4	28.4	16.5	22.3

### Weather

	High	Low	Prec.
	H	L	Prec.
Mar 25	56	37	0.0
Mar 26	53	28	.21
Mar 27	52	25	0.0
Mar 28	60	25	0.0
Mar 29	48	25	0.0
Mar 30	59	25	0.0



# SBOC: Water outlook good, gopher bounties set



Owyhee Reservoir is likely on its way to a solid year, gopher bounties were set and the prospect of a Zebra Mussel invasion was discussed by the South Board of Control in its spring newsletter, released last week.

## Records to be submitted

The South Board said customers with 240 or more combined acres must complete a Reclamation Reform Act (RRA) form. The forms are available at the district office at 118 S. First St. W., in Homedale. Penalties that might arise from users not turning in the RRA could affect all water users, the release warned.

Property owners who have recently sold, split or purchased land also need to submit a copy of the warranty deed to transfer the ownership, the board release said.

Finally, the release stressed that, when three or more parties receive water from a single turnout, "they constitute a rotation or a water user's association" and must have an organization with elected officers in order to assume responsibility for the delivery of water at the head gate. Only the elected person(s) or their representative will be allowed to order water, so groups should contact the South Board of Control and submit the name and address of their representative(s).

The release warned that no water would be delivered until a signed form is on file for the group.

## Irrigation supply looks good

Water news included an overview of Owyhee Reservoir, which is on track to a condition as good or better than last year, according to the release. As of Sunday the reservoir was at 48 percent of capacity, with 344,701 acre-feet of water. The normal supply for an irrigation season is 450,000 acre-feet, according to South Board numbers and the Bureau of Reclamation.

Storage in the upper Snake River is also good, the release said, and that "a good supply should continue for the Gem pump lands. Most eastern reservoirs will be close to full."

The Glory Hole repair at Owyhee Reservoir has completed phase one, and phase two should bring the project to completion in 2010, the release said. The second phase of the repair, involving the 135-ton ring gate, is estimated to cost \$143,500.

## On the lookout for pests

The Owyhee Irrigation District and local boards, along with state and federal agencies, are keeping an eye on the spread of the Zebra and Quagga mussel, invasive species which colonize and clog piping and submerged machinery.

While neither species has yet been seen in Idaho, they have crept closer each year, transported by trailered boats or waterfowl. The state is attempting to determine a strategy to fight the Russian pest, which has cost millions in the cleanup of infested locales.

Gopher tails will be worth \$1 each at the South Board for patrons of the Gem and Ridgeview districts. Bounties will be paid monthly to property owners, who should contact their ditch rider office to determine when tails will be accepted. The district is offering gopher bombs and flares to landowners, at a cost of under \$3 per item.

## Ditch riders

- Ride 21 — Darrell Shira
- Ride 22 — David Bowman
- Ride 23 — Carl Seiders
- Ride 24 — Andy Howard

- Ride 25 — Servando Zalazar
- Ride 26 — Benji Bowers

John Eells, Watermaster — 337-8178 or 896-4896  
Pumping plant — 896-4199 or 250-0141  
Ron Keister, manager — 337-8069

## Water emergency numbers

Jim Engle, Foreman — 337-8068 or 250-7482



*Left: Irrigation systems should see water in mid-April. Above: Zebra mussels, which have moved closer to Idaho each year, clogging a pump (Picture courtesy USDA)*

# 3Mb High Speed Wireless Internet

# \$19.95\*

For 6 months with 1 year contract

# Safelink Internet Services

Rupert - 436-8888  
Twin Falls - 732-8888  
Boise - 331-9822

\* Call For Details • Expires April 10, 2009 • \$99 Installation

Personal and professional  
tax services for  
individuals or businesses.



Accounting .. Auditing .. Tax Services .. Financial Services

**BOWEN PARKER DAY**

BOISE - NAMPA - HOMEDALE

Certified Public Accountants Chartered

19 E. Wyoming, Homedale

337-3271

"Have your income taxes  
prepared locally  
by your hometown  
tax experts."

"Preparing tax returns in Homedale since 1947."





### Five generations gathered

Jo Howell of Homedale submitted this photo of five generations of her family gathered at Owyhee Health and Rehab last week.

**Back:** Jo Howell, great grandmother to one-month-old Antton Allen Holland. **Front row from left:** Grandmother Donna Holland, matriarch and great-great grandmother Cathy Ford, 81, and mother Sharayah Holland.

Donna, Sharayah and Antton live in Couer d'Alene. They returned to Homedale, where Sharayah received her Dedication from Pastor Chuck Ryan of the Mountain View Church of the Nazarene, to have Pastor Ryan do the same for Antton.



### Txoko Ona installs board members

Homedale's Txoko Ona Basque Club recently elected 2009 board members. The board members are, back row from left: Tony Uranga, president; John Badiola, vice-president; board members Ray Maxwell, Tim Quintana, Ric Uria, Kelly Aberasturi and Dan Uranga, treasurer. Front row, from left: Susan Jaca, board member; Diana Maxwell, secretary; and Christine Heidt, alternate board member. Submitted photo

## Easter week traditional events scheduled

Area churches are ready to celebrate Easter with traditional events.

Running daily from noon to 12:50 p.m. from Monday through April 10 is the long-standing tradition of ecumenical luncheons at the First Presbyterian Church at 320 West Sixth Street in Homedale.

The timing of luncheons is intended to allow members of the

community to attend during their lunch hour. Each day, different churches provide the lunch and a short inspirational program.

No fee is charged for the lunch, although an offering basket is available for those who wish to donate. Funds collected enable the ministerial association to do local mission work.

At 7 a.m. on April 12, the Presbyterian churches in Adrian

and Roswell will sponsor a sunrise service on the lawn of Karen and Joe Wiggins' house on 856 Emerald Slope Road in Adrian.

A continental breakfast will be served following the service at the Presbyterian Church in Adrian.

For more information on either event, call Rev. Marianne Paul at (208) 899-5049.

## Wild, colorful tale told at library Friday

Story Time at Homedale Public Library will feature "If I Crossed the Road" by Stephen Kroninger at 10:15 a.m. Friday.

Wild, wacky collages made of magazine photographs and colored paper illustrate this imaginative tale. A boy daydreams about what he could do if only he could cross the road, starting with a basketball game, a park for bike riding, and an old-cowhand grandfather to visit out on the range. Even more exciting, there could be a fishing trip, a jungle expedition, and a rocket ride to the moon for ice cream. But best of all, he could visit his friend.

Along with the story there will also be singing, refreshments and a take-home craft. The library is located at 125 W. Owyhee Ave. For more information, call 337-4228 afternoons from 1 p.m. to 5 p.m.

## Lizard Butte begins family reading program

The Lizard Butte Library kicks off its next Every Child Ready To Read program at 10 a.m. Tuesday.

The library is located at 111 3<sup>rd</sup> Ave. W., in Marsing.

Open to boys and girls up to 6, the program will be held every Tuesday for six weeks and features a family storytime to read books, sing songs and have lots of fun.

Library staff also will offer tips to parents on how they can help get their children ready to read. Each week each family gets to take home a book for their budding reader.

Register at the Lizard Butte Library or call 896-4690 or e-mail lizardbuttelibrary@yahoo.com.

More dependable.

**Pivots • Wheel Lines • PVC  
Solid Set Rentals • Pump Rentals  
Mainline Rentals • Irripod Drag Lines**

Call about our preventative maintenance program for pivots!  
ANY BRANDS! Certified Pivot Technicians on hand.  
Preventative Programs from \$40/Tower  
Ask us about Sprinkler Lube to extend the life of your gearboxes!

**Rain For Rent**  
**1303 N. 20th Nampa, ID**  
**208-466-8929**

**Reinke**  
MORE RIGHT THAN RAIN  
www.reinke.com

Make sure your irrigation system will operate at peak efficiency in the spring – have us check it out now. Our Reinke technicians are factory trained to keep your system trouble free. With regular seasonal maintenance, you'll get more years out of your center pivot. Call now to schedule a fall maintenance check.

**Grand Re-Opening!**  
**April 6, 2009**  
**WE NOW CARRY**  
**RESELL CLOTHING!**  
**NOW TAKING CONSIGNMENTS,**  
**CALL TERRI FOR DETAILS.**

Affordable Handmade Gemstone Jewelry  
Unique Gifts  
Handmade Crafts & Much More!

**Terri's Jewelry & Gift Boutique**

114 W. Idaho Ave. Homedale, Idaho  
(208) 890-1701

www.t-bug.smugmug.com  
beading4you@yahoo.com  
Visa/MC accepted

**OPEN MONDAY - SATURDAY 11 AM TO 5 PM**



# HMS night offers culture, arts and college info



**Bobby Gaytan**

*Submitted by  
Faith Beyer Hansen*

Are you *LINKed Up*? On Monday from 6 p.m. to 8 p.m., Homedale Middle School will be holding its first *LINK Up* night to connect community and school through literacy. Open to all families and students of HMS, the Literacy Impacts Neighborhood Knowledge event will feature free food catered by Homedale's Del Rio restaurant, door prizes and opportunities to share in both community culture and school culture through dance, art and

storytelling.

After a brief meeting about our school's Title I designation, families will have an opportunity to move between stations, which will include listening to Basque oral traditions, learning from an expert folk dancer and participating in the creation of a school mural. We have several local artists joining us, including: Bobby Gaytan, a gifted muralist, whose work is displayed at the Hispanic Cultural Center and Norma Pintar, an artist-in-residence through the Idaho Arts Commission.

In addition to cultural activities, there will also be representatives from various colleges in the area to talk about how students can access and pay for college.

The night will also offer opportunities for families to connect with local resources such as the public library and school-based resources such as tutoring and grants for refurbished computers.

A celebration of information, food and fun, *LINK Up* is a chance for families, teachers and administrators of HMS to connect and see how Literacy Impacts Neighborhood Knowledge (*LINK*).

So do not miss your chance to *LINK Up* and celebrate literacy, family and community.



## An artist's eye

*Bobby Gaytan's mural in Nampa seeks to reflect the viewpoints of 15 Latino youths from Canyon County. Gaytan united the group of youths to develop the mural for the Hispanic Cultural Center of Idaho.*

## Dust Devils 4-H ride to fund horse judging team at Nationals

The Dust Devils 4-H Club is rolling out its second annual Owyhee Mountain Trail Challenge — this time to help pay the way of the nationally recognized Owyhee County 4-H horse judging team. The ride will be held on May 30, and money raised will help send the team of Kortney Bahem, Mandy Brasher and Evon Timmons to Mississippi in June for Nationals — something that hasn't occurred in a decade in Owyhee County.

The team placed fifth in the state of Idaho in 2008, and Bahem took top spot individually. Brasher is currently a pre-med freshman at Dartmouth, Bahem is a freshman at Casper College in Wyoming majoring in range management and equine science and Timmons is a student at Marsing High School.

According to a club press release, this isn't the average trail show. Riders will have the feeling of being on a "real trail," as they ride over a series of obstacles that would be found in a real trail situation, such as water crossings, ditches, steep banks, logs and wildlife.

Exhibitors will be judged on execution, horsemanship and the

willingness of the horse.

Registration will take place at 7:30 a.m. May 30 at 28098 Fox Lane in Wilder. A clinic will be held at 8:30 a.m. with the show beginning at 9 a.m.

Mail entry form and payment to Sylvia Bahem, 3303 Market Rd., Homedale, 83628. Call (208) 249-6889 for more information or directions to the show. Entry forms can be accessed online at <http://extension.ag.uidaho.edu/Owyhee> or at [www.this-tlecrekranch.com](http://www.this-tlecrekranch.com).

Riders must dress for the trail, not the show ring, organizers say. Jeans and boots, chaps and chinks are permitted. Horses won't need to be bathed or clipped, and helmets are optional.

All entries must have appropriate tack, and either Western or English is permitted. No tie-downs or draw reins are allowed.

Organizers are inviting all skill levels to the show, and say they have scheduled judges that will be helpful and informative.

There will be a scholarship fund for riders who cannot afford the entry fee. Call Bahem for more information.

Awards will include rosettes for first- through third-place riders.

## Homedale Lions Demolition Derby

Plans for the 27<sup>th</sup> Annual Homedale Demolition Derby held on the 4<sup>th</sup> of July at the Fairgrounds are underway!

**The 4th is on a Saturday this year!**

*We can let it all hang out!*

**Fireworks & Live Music by "Straight Away"**

**Get in on the Car Building & Driving Action!  
Get Started Now! No Entry Fee!**

*The Lions Club would like to know how many cars are being built so we can plan accordingly. You can pay \$30 into the drivers "Kitty" which is distributed back to winning drivers.*

**Get out & find yourself 2-3 sponsors  
& Start building your car!!!**

**GREAT PRIZE MONEY!  
BE A PART OF THE SHOW!**

No Imperials this year! Unless you ran one last year & need to finish it off!

**No Compacts, Station Wagons are OK.**

**GIVE US A CALL**

Jeremy Townsend 573-1350 - For Car Number

Rob Townsend 896-5000 - General Questions

Jerry Breshears 337-5992 - Car Build Information

On-line info: [www.homedalelionsclub.com](http://www.homedalelionsclub.com)

*Read all about it  
in the Avalanche!*



# ION museum displays Native American artifacts



The ION Heritage Museum in Jordan Valley has gone through some changes in personnel as well as exhibitions.

According to the February newsletter, there is a new person delivering the news of the museum. Jackie Mathisen takes over for Adele Payden. Payden steps away after spending five years on the board of directors and serving as the point person for the media.

A retired psychologist and amateur photographer, Mathisen produced her first newsletter last month. The newsletter pro-

motes the museum's new Native American artifact exhibit with a Mathisen photo of a willow basket donated by Forest Fretwell.

In news from the museum's board's January meeting, curator Joanne Cunningham is working on converting an upstairs room of the building at 502 Swisher Ave., into a schoolhouse complete with vintage desks.

Also, Andy Franco of Calico Forge and Blacksmith is designing security bars for the museum's downstairs windows. According to the museum's Web site, the security bars are being built through

a \$2,000 grant from the Cenarrusa Foundation for Basque Culture, and an \$1,800 grant from the Malheur County Cultural Trust will pay for the installation.

Plans continue for Jordan Valley's participation in the Oregon statehood sesquicentennial, too.

Winter hours of the museum vary, and organizers urge folks to call ahead to make sure the museum is open. Tours are available by appointment any day, according to the Web site.

For more information, call the museum at (541) 586-2100 or Cunningham at (541) 586-2984.

# OCHS works to unveil exhibits for Outpost Days

Native American, sheriff's displays growing at Murphy museum

Two new exhibits at the Owyhee County Historical Museum in Murphy highlights the region's Native American heritage.

The Owyhee County Historical Society introduced two new exhibits focusing on Native Americans at the annual Christmas gathering in December.

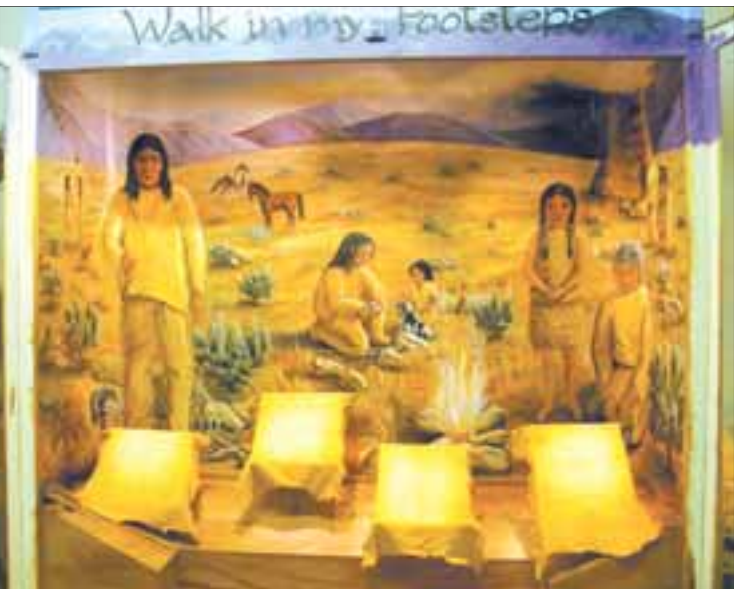
The exhibit committee continues to work on these exhibits and will showcase them at Outpost Days on the museum grounds on June 6-7.

A centerpiece of the exhibit is cross section of a wickiup, the frame of a dwelling used by the Crow family. Murphy resident Shirley Kroeger was instrumental in developing the wickiup, which is meant to be an interactive portion of the exhibit.

Visitors are encouraged to step inside the structure to get a closer look.

Research from Owyhee County museum director Dr. Thom Couch and Dr. Deward Walker of the University of Colorado fueled the exhibit. The men looked into early Native Americans that inhabited this part of the country.

Of particular interest is the Crow family, who resided in the Oreana and Castle Creek area during the early part of the



century. Through photos and census reports, the exhibit pays homage to this family.

Another exhibit in the works deals with information and items of interest obtained from men who

have served as Owyhee County Sheriff, including current lawman Daryl Crandall, are being used to create a sheriff's exhibit at the museum. Society members hope to have the exhibit available to the public in time for Outpost Days.

The Outpost Days quilt raffle continues as well. The quilt is now on display at the museum.

According to a press release, the purpose of the Owyhee County Historical Society is to preserve the past for future generations.

"Please plan to join us for this annual celebration and share in our excitement in presenting these new and enhanced exhibits," the OCHS writes in a press release.

The OCHS welcomes volunteers. Call (208) 495-2319 for more information.

**PRUETT**  
**Lumber & Supply**

**SPRING  
LAWN & GARDEN  
SPECIALS**

**Sprayers • Hoses • Fertilizer • Pest Control  
Landscaping Equipment • Tools  
Wheelbarrows & Much More!**

**Cattle Panels**

**FREE LOCAL DELIVERY**

**Open 8 am - 6 pm Monday - Friday • 8 am - 5 pm Saturday**

**4220 Pioneer Road, Homedale  
East on Pioneer Road from Hwy 95**

**Rough Cut  
Lumber  
In Stock**

**RR Ties  
(15 ct. Bundle)  
10.95 each  
11.95 singles**

**CARRYING  
PROPANE!**

**337-5588**  
fax 337-5590

# Descendants of Utter survivor to lead tour of site

Bus trip includes disaster site NW of Murphy

Descendants of a survivor of the Utter Disaster, which took place in Owyhee County nearly 150 years ago, will help tell the tale during a bus tour Saturday.

The Canyon County Historical Society will take Tanya Viers, Kathy Ingram and others into Oregon to retrace the story of a small band of survivors who faced starvation and death 149 years ago. The last wagon train of 1860 traveling along the south side of the Snake River (the "South Alternate") met with disaster when Indians attacked on a site northeast of Murphy.

Survivors included a brave 13-year-old Emeline Trimble who led five younger children along the edge of the Snake River to what they hoped would be safety. What turned out was a series of events that would rival the Donner Party tragedy in California.

Emeline survived and eventually married the great grandfather of

sisters Tanya and Kathy, who both live in Idaho but know very little of Emeline's amazing story.

Malheur County Historical Society president Dr. Tom Gray will tell the story. Gray is a retired veterinarian from Vale, Ore., who lives near the location of "starvation camp" and is very familiar with the story of the fates which befell those people who fled the original site of the massacre and survived or succumbed to the six-week ordeal. Gray will trace the survivors' journey in Oregon, and show gravesites along the way.

A lighter side of the tour will include the outdoor murals in Vale depicting the Oregon Trail.

The all-day tour will leave from the Nampa Train Depot Museum in Nampa.

Tickets are \$50 for CCHS members and \$55 for non-members, and includes travel on a luxury coach with restrooms, a tour booklet, lunch, snacks, and refreshments along the way.

Some seats are still available. Call (208) 467-7611 to order tickets. Cash, check and credit cards will be accepted.



# GREAT RATES. NO GUARANTEE FEE. IT'S TIME.

WE LEND. YOU SUCCEED.

RATES AS  
LOW AS

# 6.25%\*

**Goodbye guarantee fee. Hello business opportunity.**

SBA lending is changing, and Zions Bank is ready to give you every opportunity.

Starting with no guarantee fee and great rates. This combination of savings makes it the ideal time to get your SBA loan. And as the #1 SBA lender in Idaho for 7 consecutive years, we have the expertise to make it happen.

We have money to lend. You have a business to grow. Now is the time.

\*Rate of 6.25% is for SBA7(a) loans and requires automatic payment from a Zions Bank checking account. Excellent credit history is required to obtain advertised rate; not all borrowers will qualify. Waiver of the Guarantee Fee is subject to change by the Small Business Administration (SBA). Credit approval required, restrictions apply see bank for details. Offer expires 9/30/09 and is subject to change without notice.

**Call our Branch Manager in Wilder,  
Connie Tolmie, at 208-482-6218.**



Member FDIC

## ZIONS BANK®

Idaho



**WE HAVEN'T FORGOTTEN WHO KEEPS US IN BUSINESS!**



T  
H  
E

O  
C

Folks worth knowing in Owyhee County

JIM MITCHELL, GIVENS  
Vintner

Know someone worth knowing? Contact the Avalanche with feature ideas at [jon@owyheeavalanche.com](mailto:jon@owyheeavalanche.com) or (208) 337-4681.

# Growing grapes at Givens extends family heritage



Owyhee View Lane. The Canyon County vineyard was sold — a proposed co-op winery is still in the works at Polo Cove — and the Mitchells planted their own vineyard overlooking the Snake River, bringing home and winery together.

At present, the Miceli vineyards are planted in Tempranillo (a Spanish red), Tablas (a Rhone grape variety), Creek Syrah (also a Rhone variety), Zinfandel, Cabernet Sauvignon, Viognier and Chardonnay grapes.

The Mitchells do all the work themselves, for the most part.

“I’m the only one making the wine and taking care of the vineyard, but I do hire a couple of neighbors to help with the bottling and pruning,” he said. “My wife Michele helps when we have guests for tastings. When a large crowd arrives she pretty much takes care of the event.

“As far as the actual work in the vineyard, once the pruning is done, we have to spray every 10 to 12 days for mildew, and then monitor the vines for other diseases throughout the growing season.”

The climate and soils of Southwest Idaho are the reason so many wineries, not just Miceli, have sprung up. The generally long, warm days and cool nights during the growing season, as well as rich soils — much of it volcanic sediments from the late ice age Lake Idaho — provide perfect growing conditions for excellent wine grapes.

Mitchell’s wines have consistently won awards.

His 2003 Merlot took bronze at the Treasure Valley Wine Society awards in Boise in 2006; the winery’s 2004 Cabernet Sauvignon took Best of Cabs at the Boise Co-op in 2006 as well as Best of Show at the Co-op and a silver award at the Treasure Valley Wine Society competition that same year; the Miceli 2005 Merlot was awarded bronze at the Treasure Valley Wine Society in 2006 and at the large and very competitive Northwest Wine Summit in 2008. Their 2006 Chardonnay won silver at that same prestigious event. The Northwest Wine Summit is the largest competition in the Pacific Northwest, and more than 1,200 wines competed last year.

Those seeking to try an original Owyhee vintage can find Miceli wines as close as Snake River Mart in Marsing and The Orchard House in Sunnyslope. They are also available in Meridian at A New Vintage and The Wine Garden, in Boise at the Boise Co-op and Bueno Cheapo Vino, and in Nampa at the Smoke ‘n Brew.

— MML

### Jim Mitchell returns to roots

When Jim Mitchell of Givens took up winemaking, it wasn’t just a hobby — it was a return to something from his childhood.

Mitchell is the owner of the Miceli Winery, and Owyhee County’s only vintner at present. He grew up watching his grandfather, (the winery’s namesake) Francesco Miceli, make wine, and carries on the tradition.

“We are a small, family owned and operated winery drawing on my Italian heritage,” Mitchell said in the introduction on the Miceli Web site. “I guess I got my winemaking genes from my Grandpap, Francesco Miceli. He was the inspiration for the photo on our label. And his toast, ‘Cent’ Anni’ — ‘here’s to 100 years ... and one more’ — is repeated at all our meals.

“My Grandfather made wine in the cellar of the family home in Clearfield, Pa., where he settled at the turn of the century after migrating from Sicily,” Mitchell related. “As I understand it, all the neighbors got together and ordered grapes from California. I remember going down to the wine room and filling a pitcher for the dinner. At that time there was no worry about oxygen or topping the barrel — you didn’t bottle it, just used it from the barrel.”

While there’s a lot more technology involved in Miceli wines, now, Mitchell still keeps his feet on the ground about vintages.

“As far as what to look for in a wine, I go by my taste. That’s it,” he said. “I can’t do wine speak. Can’t tell you

about raspberries, asparagus, chocolate. I make a wine that pleases me, and I bottle it. If I don’t think it’s good, it goes down the drain.”

In 1998, while Mitchell was living in Paso Robles, Calif., he “did work for many of the wineries in the area for many years. I became fascinated with the process and decided to try it myself.”

Mitchell didn’t turn his hand to producing his own vintage until that year, and his first attempt wasn’t an unalloyed success.

In 1998, while living in Paso Robles, he gathered grapes from neighbors, crushed them by foot in an old wash tub and “fermented in the guest bathroom” according to the winery’s Web history. His initial effort resulted in 10 gallons of undrinkable Cabernet Sauvignon that wound up being poured down the drain.

He got a lot better in a hurry.

The next year saw Mitchell planting 350 Zinfandel vines. Soon, he had won his first awards, the 2000 Cabernet Sauvignon and 2001 Zinfandel awards from the MidState Fair in Paso Robles. Shortly after the move from undrinkable to prize-winning, Mitchell and wife Michele packed up and moved to Idaho, bringing their winemaking with them.

His first vineyard was in Canyon County, where Polo Cove is now planned, and Mitchell’s grapes — Chardonnay and Reisling — were chosen for the Ste. Chapelle Winemakers Series, their excellence recognized. By 2003, the Mitchells had sold their California home and moved to their home and built their winery near Givens, at 8114



**Top:** Mitchell grows seven different types of grapes presently at the Miceli vineyards. **Bottom left:** One of the perks of having a winery at Givens is the view. **Bottom right:** Harvest time at the winery brings a few extra hands on to deal with the crop.





# Avalanche Sports

WEDNESDAY, APRIL 1, 2009

## Eby leads tacklers in Outlaws' win

Michael Eby kept up his solid defensive play during the weekend for the Billings Outlaws. The Homedale High School and Eastern Oregon University graduate recorded a co-team-high seven tackles Saturday in the Outlaws' 46-41 Indoor Football League victory over the Colorado Ice in Loveland, Colo. The Outlaws (2-0) are back home in Montana on Saturday for a game against the Omaha Beef. Live stats and play charts of the game will be available on [www.billingsoutlaws.com](http://www.billingsoutlaws.com).



**Spring brings fishing family fun**  
*A father casts a line into the Island Park pond in Marsing as his son occupies himself. The Idaho Department of Fish and Game plans a plant of trout in the pond this month.*

## State free fishing day set for June 13

The Idaho Department of Fish and Game has announced June 13 as Free Fishing Day in the state. Anglers of all ages, residents and nonresidents alike, can celebrate the day by fishing anywhere in Idaho without a license. Though fishing license requirements are suspended for the day, all other rules, such as limits or tackle restrictions, remain in effect. "Free fishing day provides a great opportunity for novices to give fishing a try and perhaps develop it into a life-long pursuit," Fish and Game regional fish manager Jeff Dillon said. "Parents are encouraged to bring their children out for a day of fun fishing excitement."

Lack of fishing experience is no excuse. At special locations around the IDFG Southwest Region, equipment will be available for use, and fishing experts will be on hand to help novice anglers learn the ins and outs of fishing. In addition, all these locations will be stocked with hatchery rainbow trout prior to the special day. An events list will be released later. Call Fish and Game's Nampa office, 465-8465 for information. Fish and Game also announced that 500 catchable-sized rainbow trout will be planted in Marsing Pond at Island Park this month. The fish from the Nampa hatchery are part of a 25,000-fish release across the southwest region.

### Woodland Construction

Quality structures @ affordable prices

**Custom Built**

Shops, Barns, Garages

Residential, Commercial & Agriculture

Custom Homes & Remodels

Free Estimates

Serving the Treasure Valley for 17 years  
licensed and insured • RCT-23386

## Trojans JV softball on rise as 3A SRV season arrives

### Homedale wins four of first six behind pitching

With six games played, Homedale High School's junior varsity softball team is out to a 4-1-1 start to the season, and should carry some major momentum into Friday's match at home against 3A Snake River Valley conference foe Weiser. Shelley Sherk recapped the team's season for The Owyhee Avalanche in a report received Saturday. Opening against Marsing, the Trojans started the season with a 21-5 romp led by pitchers Aubrey Nash and Laurien Mavey. Both

Megan Harper and Raven Kelly supplied the stick in the matchup, with three RBIs each. Homedale moved on to a doubleheader with New Plymouth, and split 1-1 with the Pilgrims. The first game was a tight one, the edge going to New Plymouth as Homedale lost, 4-3. Marissa Ensley pitched the entire game, giving up just four walks and striking out seven. In the second game, also a tightly fought battle, Homedale won 13-12 with Carmen Zatica sealing the deal with positive pitching that struck out nine Pilgrims. Batters of note included Jessica Westergard, 3-for-3, and Mavey, who went 2-for-3 with a triple. The Trojans picked up a

decisive win against Melba, 12-2, with Nash and Ensley hurling. Ensley and Harper each had a pair of RBIs. The team's lone tie came from a darkness-halted 3A SRV game against McCall-Donnelly that failed to reach five innings. McCall-Donnelly declined to hire officials for another day to decide the issue, so the game goes down in the year's records as a tie. Megan Quintana had a hot bat against Vandals, going 3-for-4 and scoring three. Just prior to Spring Break the Trojans beat non-conference opponent Nampa, 13-7, with Zatica pitching an amazing game, retiring 11 at the plate. Quintana again led batting, going 3-for-4.

# TROJAN

# SPRING

# SPORTS

### Baseball

Varsity

Monday, March 30, at Vale, 5 p.m.

Tuesday, March 31, at home vs. Parma, 5 p.m.

Junior varsity

Monday, March 30, at home vs. Vale, 5 p.m.

Tuesday, March 31, at Parma, 5 p.m.

### Softball

Varsity

Tuesday, March 31, home vs. Parma, 5 p.m.

Friday, April 3, at Weiser, league game, 5 p.m.

Junior varsity

Tuesday, March 31, at Parma, 5 p.m.

Friday, April 3, home vs. Weiser, league game, 5 p.m.

### Golf

Monday, March 30, Homedale SRV, River Bend, 3 p.m.

### Tennis

Tuesday, March 31, At home vs. Payette, league game, 4 p.m.

### Track & field

Saturday, April 4, at Nyssa Invite, TBA

**AUTO PARTS**

OWYHEE AUTO SUPPLY

337-4668

BOWEN PARKER DAY CPAs

BOISE - NAMPA - HOMEDALE

337-3271

**Farm Bureau Insurance Company**

337-4041

337-4664

138 East Idaho Homedale

337-6222

appointments 573-1788

se habla español 899-3428

Owyhee Sand, Gravel & Concrete

337-5057

337-4681

337-3474

www.pauls.net

337-3142

HOMEDALE CHIROPRACTIC CENTER

J. Edward Perkins, Jr. D.C.

337-4900



CJ Strike Tourney schedule

All bass events	
<b>April 11</b> Premier Bass, 6 a.m. to 5 p.m., Blacksands ramp, 130 people/65 boats, catch-and-release	<b>Aug. 12</b> Midnight Bassmasters, 4 p.m. to 9 p.m., Blacksands boat ramp, 16 people/eight boats, catch-and-release
<b>April 19</b> Mini Cassia Bassers, safe light to 3:30 p.m., Blacksands boat ramp, 30 people/15 boats, catch-and-release	<b>Aug. 15</b> Intermountain Bass, 6 a.m. to 5 p.m., Blacksands boat ramp, 30 people/15 boats, catch-and-release
<b>April 25</b> Magic Valley Bassmasters, 6 a.m. to 4 p.m., Blacksands boat ramp, 30 people/15 boats, catch-and-release	<b>Aug. 29</b> Magic Valley Bassmasters, 6 a.m. to 4 p.m., Blacksands boat ramp, 30 people/15 boats, catch-and-release
<b>May 6</b> Midnight Bassmasters, 4 p.m. to 8:30 p.m., Blacksands boat ramp, 16 people/eight boats, catch-and-release	<b>Sept. 13</b> Mountain Home Hawg Hunters, 6 a.m. to 4 p.m., Air Force boat ramp, 25 people/15 boats, catch-and-release
<b>May 9</b> Payette River Bassmasters, safe light to 4 p.m., Blacksands boat ramp, 30 people/15 boats, catch-and-release	<b>Sept. 19</b> Idaho Bass Hunters, 6 a.m. to 4 p.m., Blacksands boat ramp, 30 people/15 boats, catch-and-release
<b>May 16</b> Wyoming Bass Federation, 5 a.m. to 4 p.m., Blacksands boat ramp, 26 people/13 boats, catch-and-release	<b>Sept. 26</b> Idaho Bass Federation, 7 a.m. to 4 p.m., Blacksands boat ramp, 100 people/50 boats, catch-and-release
<b>May 29</b> Mountain Home Hawg Hunters, 7 a.m. to 4 p.m., Blacksands boat ramp, 50 people/25 boats, catch-and-release	<b>Oct. 17</b> Idaho Bassmasters, 7 a.m. to 4 p.m., Blacksands boat ramp, 36 people/18 boats, catch-and-release
<b>June 6</b> Lakeside Bassmasters, 6:30 a.m. to 3 p.m., Blacksands boat ramp, 15 people/seven boats, catch-and-release	<b>Oct. 24</b> Boise Bass Busters, 6 a.m. to 4 p.m., Blacksands boat ramp, 30 people/15 boats, catch-and-release
<b>July 19</b> Mountain Home Hawg Hunters, 6 a.m. to 4 p.m., Air Force boat ramp, 25 people/15 boats, catch-and-release	<b>Nov. 7</b> Idaho Bassmasters, 8 a.m. to 4 p.m., Blacksands boat ramp, 80 people/40 boats, catch-and-release

Homedale restaurant owners win national eatery award

Owyhee Lanes & Restaurant has received an award from a national bowling trade group. The Homedale restaurant earned the National Bowling Establishment Association of America’s 2009 Chef of the Year Award. The award was announced in the January issue of the “Bowling Center Management” monthly trade magazine, according to a press release received by The Owyhee Avalanche last Wednesday. The award honors owners Donna and Mike Marose and their restaurant staff. Donna credits the award to the restaurant’s cooking staff, which is headed up by Chef Lazaro Juarez. “Our main dinner cook has been the driving force in making everything we do come together,” she said. “Chef Lazaro Juarez has over 30 years of cooking experience.” The Maroses bought the restaurant and bowling center on Oct. 1, 2006.

Big game and wolf season set 2009 may be hunters’ first chance to bag a wolf

Idaho Fish and Game Commission Tuesday, March 24, adopted big game seasons as recommended by Fish and Game biologists, with a few last minute changes in response to public comments. Overall, species hunts in a variety of locations saw reductions following dips in big game numbers. Commissioners adopted hunting season dates on wolves statewide, pending removal of wolves in Idaho from the endangered species list, expected to take effect later this spring. The seasons would be the same as proposed last year, except seasons would be extended in the Lolo and Sawtooth zones to run from September 1 through March 31. The seasons would run from September 15 through December 31 in the Selway and Middle Fork zones, and elsewhere from October 1 through December 31. Commissioners would set harvest quotas in August. Meanwhile, Fish and Game will respond aggressively to chronic depredation. Other seasons changes include capping elk tags in two elk zones; reduced general deer opportunities for white-tail deer in northern Idaho and mule deer in southern Idaho; changing general pronghorn archery season to unlimited controlled hunts; and increased opportunities for senior and disabled hunters. State big game populations, like the nation’s economy, are going through a period of correction, some planned some not, former big game manager Brad Compton told commissioners Tuesday. Under the seasons adopted by the commission, A and B tags in the Sawtooth Elk Management Zone and A tags in the Diamond Creek Zone will be capped. A and B tags already are capped in the Selway and Middle Fork zones, and B tags already are capped in the Dworshak, Lolo and Elk City zones. The new caps will be phased in over three years. In the first year, A tags will be reduced by 15 percent in the Diamond Creek Zone; A tags will be reduced by 37 percent and B tags will be reduced by 27 percent in the



Sawtooth Zone. Other season changes are: **Deer, controlled hunts:** 8 percent reduction in antlered hunts. 4 percent reduction in antlerless hunts. **Deer, general seasons:** 26 day reduction in northern Idaho seasons. 7 day reduction in southern Idaho seasons. **Elk, controlled hunts:** 2 percent increase in antlered hunts. 7 percent reduction in antlerless hunts. **Elk, general season hunts:** 27 day reduction in antlerless hunts. 45 day reduction in antlered hunts. **Black bear season extended in the Clearwater Region units 14, 15 and 18.**

MARSING  
HUSKIES  
SPRING SPORTS SCHEDULE

Baseball

Monday, March 30, vs. Glenns Ferry, 4:30 p.m.  
Tuesday, March 31, vs. Melba, 5 p.m.

Softball

Monday, March 30, vs. Glenns Ferry, 4:30 p.m.  
Tuesday, March 31, vs. Melba, 5 p.m.

Track and field

Wednesday, April 1, at New Plymouth 3:30 p.m.

GO  
HUSKIES!

896-4162

896-4222

896-4185

896-4124

896-4331

The Owyhee Avalanche

337-4681

Studded Tires need to come off your car by April 15th.  
I can save you money!  
Swap back to your summer tires or save on new tires

Call Rob at 896-5000 to see how much you can save.  
We also do exhaust repair

200 2nd Ave. West, Marsing  
Downtown Marsing, right behind NAPA parts store  
Hours: M-F 8am - 5pm • Sat by appointment



# Looking back...

*from the files of The Owyhee Avalanche and Owyhee Chronicle*

## 25 years ago

April 4, 1984

### Plans formulating for city-wide cleanup

A free barbecue, a slogan contest for the city-wide clean-up, and a special Mayor’s award are all new ideas planned by the City beautification committee in an effort to create a more positive interest in the appearance of the town of Homedale. A volunteer group composed of Mike Blankenship, Bette Uda, Paul Fink, Nancy Hunt and Jean Freelove were assigned various groups to contact for assurance of participation.

The committee stated they do not expect any one to go around cleaning up someone else’s yard but just to be responsible for their own property. Mayor Paul Fink is looking for an open area where people can haul their trash where it can be burned. All of the cans and non-burnables will then be scooped up and hauled off to the dump. This way, it was decided, people putting their trash out in the alleys wouldn’t have it scattered all over before pick-up time. Also this central dumping point would be a time-saver as trucks would not have to go through each alley.

### Dog control program underway

Beginning in the first week of April, the City of Homedale will be implementing a new dog control program in the Homedale city limits. The city police department will be relieved of the responsibility of a dog management with the enactment of a new Animal Control Officer, though the program will still be under its auspice.

According to Police Chief Allen Bidwell, the main grievance of the police handling the dog management has been “that it’s a very low priority duty.” But even so, Bidwell said that the department has picked up over a hundred dogs a year, which he feels is not a record to be ashamed of considering their other responsibilities.

Expressing his opinion that the new garbage ordinance has alleviated some of the dog problems in certain areas, Bidwell said “in the cleaner areas, free of collected garbage, there does not seem to be much of a problem with the dogs.” But that’s not to say that a problem does no exist and as the weather improves the complaints compound.

### Girls, boys both win Wednesday events

The Trojan track team, led by relayer Randy Jewett, won both girls’ and boys’ events in their second straight victory last Wednesday afternoon.

Homedale boys beat Parma, 81-76.5 , and Fruitland came in third with 22.5 points. In the girls division, Fruitland lost to Homedale, 69-52, while Parma managed only 38 points.

Jewett, who participated in three winning relay teams, also grabbed the gold in the 330 intermediate hurdles.

Other Homedale winners were Mike Frank in the shot-put, Gary Kushlan in the 120 hurdles, Jim Nettleton in the high jump, Randy Shanley in the 400 open, Greg Lyon in the triple jump, and Bill Camel clocked in first in the mile.

Trojan April Chandler took the two mile run, while Shelly Coffing ran in the winning 440 relay team and raced to the head of the pack in the 330 hurdles to give the Homedale girls the victory.

Coach Tim Bunn said after the meet, “Overall the kids are improving and I was pretty happy with our performance.”

### Students go to festival

Students in College Prep Class of Homedale High school left early Wednesday morning (3am) for a three-day trip to Ashland, Oregon, to attend the Shakespearean Festival. The students will see two live plays with actors and actresses performing on stage. One play is entitled “Hay Fever” and the second one is a Shakespearean play. The group will also visit the famous Redwood Forest in California.

Arrangement for the trip was made by Frank Craig, College Prep teacher. The students earned money for the trip by managing a number of fundraising projects including a car wash, an after-the-game dance, a “Morp” dance, and the concession stand.

## 50 years ago

April 2, 1959

### Three boys enter exhibits at fair

Everett Conner, Jim Frank and Billy Trostle will have exhibits displayed at the Regional Science Fair for southwestern Idaho and eastern Oregon at the Northwest Nazarene college, Nampa, April 4.

Everett Conner and Jim Frank will exhibit a radio transmitter that transmits with light rays instead of sound, and Billy Trostle will display an exhibit of butterflies and insects.

A trip to Spokane to the Inland Empire Science fair will be awarded to the two top winners.

### Frosty Palace sets opening

Grand opening of the Frosty Palace, a drive-in café featuring window service for sandwiches and ice cream, will be held Tuesday, April 7, announces Melvin C. Rigby, owner and manager.

Free drinks and ice cream will be featured for the gala opening and special reduced prices will be in effect that day, Mr. Rigby said.

The Frosty Palace, a new business in Homedale located on Idaho avenue and 1<sup>st</sup> street east has been open for business for several weeks, but held off its formal opening awaiting a new sign which is to be installed this week.

Employed at the new establishment, besides Mr. Rigby, are Bonnie Ross and Mrs. Wanda Jesenko.

### Grand View news

Melody Time was the theme for the Gold and Green Ball which the LDS Grand View ward held last Friday night with the Mellow Notes of Boise providing the music. Invocation was given by Frank Millett and Lynn Loveland and a pantomime by Jack Jensen. Delores Collett, Judy Jensen, Rose Hellyer, and Celia Bybee were given gifts for their achievements in the Gleaner Girls. The dance directors were Frances Field and Weldon Coombs; general chairman, Vera Floyd assisted the Gleaners; master of ceremonies, Frank Pike; refreshments, Fern Lyons; invitation, Willa Hipwell; publicity, Eleanor Bybee; and programs, Dar Thel Pike. The Boise stake informed them that the floor show rated them participation in the district dance festival May 9.

### Boy Scouts visit Dairymen’s creamery

March 21 the Boy Scouts of troop 9 visited the Dairymen’s creamery in Caldwell.

After a tour of the plant the boys, Johnny Radcliffe, Phillip Mancke, Donald Leavitt, Roland Thatcher, Billy Breach, Norman Taylor, Tommy Thompson and Dennis Rinehart and their leader, Paul Thatcher drove to Boise where the boys toured the state capitol and the museum.

### Homedale locals

Easter Sunday guests at the Paul Zatica home were Mr. and Mrs. James Staley and children, Vale, Ore., Mrs. Staley, Vale, Ore., Mr. and Mrs. Justo Yzaguirre, Marsing, and Mr. and Mrs. Joe Zatica, Jordan Valley, Ore.

Enjoying a picnic at Succor Creek canyon Easter Sunday were Mr. and Mrs. Walt Adams, Mr. and Mrs. Kenneth Downing and family, Mr. and Mrs. Don Davis and family, Bruneau, Minnie Paul of Murphy, Mr. and Mrs. Perle Davis, Mr. and Mrs. Bob Davis and family, and Frank Davis.

Mr. and Mrs. John Echevarria and family and Mr. and Mrs. Harvey Pegram enjoyed Easter dinner at El Gavilan. Later, Mr. and Mrs. Orville Pegram, Caldwell, visited at the Harvey Pegram home.

Mr. and Mrs. Frank Haylett, Grand View, were weekend guests of Mr. and Mrs. Warren Stimmel. Dinner gusts Sunday at the Stimmel’s were Mr. and Mrs. Gene Skogerson, Boise, Martha Mortensen, Nellie Kelsom, and Mr. and Mrs. Glen Selders. The group later visited Hans Peterson at the nursing home.

Mr. and Mrs. Deward Bell and family enjoyed the Easter vacation visiting Mr. Bell’s brother, Dale Bell, at their home at Branberry Hot springs near Buhl.

## 140 years ago

March 27, 1869

OUR HIGHLY virtuous, extremely fastidious and excruciatingly modest neighbor of the Wave has had his delicate nerves severely shocked and shattered by a “malicious” letter which appeared in a previous number of the Avalanche over the signature of “Occasional.” We regret that our neighbor’s feelings have been so outraged; but as his is about the only plaintive wail that has been wafted to our ears in reference to the matter, we infer he is the only one hurt. The letter in question was written from San Jose, Cal., and we have reason to know that it is in the main correct; and we apprehend it was no more the intention of our correspondent to scandalize ladies or gentlemen that it was the intention of the radical correspondent of the San Francisco Chronicle, when writing from the same locality, on the same subject. The performances of certain sentimental young ladies and gentlemen of that pleasant city, in pursuance of their philanthropic calling, “educating Chinamen,” have frequently exited a keen sense of the ridiculous, which has not been confined to any particular party, and these strictures are made more in simple ridicule than with a view to “scandalizing ladies and gentlemen.” We fail to recognize as “honorable employment” educating Chinese, when there are other matters which demand more of our sympathy and attention – educating “poor white” children, for instance.

A PETITION, asking the business men of Silver City to close their places of business on Sunday, it is said will soon be circulated. Some object to the proposition, on the ground that they would not know what to do with themselves; others say that they would be willing to close up altogether if they could get the balance to agree to it. The most of us have been taught to regard Sunday as a holiday at least, if we had no greater reverence, and we should like to see it respected even here in the wilds of Idaho; but we don’t need it as a day of REST just now! Yet we hope it will be made a rule.

TAKE IT BACK. In our last issue there appeared an article under the head of “Mining Difficulty,” which, we are informed by some of the parties whose names were used, was incorrect in some particulars. As it was not, nor is not our intention to distort facts or do injustice to any one, we cheerfully make the correction. The phase of the affair, as published in the article referred to, was obtained from general rumor. Mr. Woodward, to whom we alluded as taking a part in the war, appears not to claim any interest, and was merely acting in the capacity of mediator between the contending parties. Mr. Brown says that he is “monarch of all he surveys,” and we have no inclination to dispute the premises. The Messrs. Henry, also, declare that they are in possession of their claims. In view of this cheerful condition of things, we surmise that the parties must all be satisfied. As we have before stated, not having visited the disputed territory we are unprepared to make any positive assertions as to whose title is the best. We asserted that the ‘Henry Brothers were in possession,” we were so informed, and made an allusion to the circumstances as matter of news, without any desire or intention to prejudice the interests of Mr. Brown or anybody else.

FISHING FOR MICE. A school teacher related that once there attended her school a little boy of perhaps four years of age, but too young to speak plain. One day, while the others were at their studies, he got possession of a pin and string. He bent the pin in the form of a fish-hook, tied the string to it, and put on it a small piece of cheese. He had seen a mouse come through a hole in the corner of the hearth, and set himself to bob for it as if it was a fish. He was observed and asked what he was doing. “Fishing for a mouse,” was his reply. As this pastime was not allowed in school hours, the teacher by way of punishment, ordered him to continue bobbing for the mouse. So the little fellow sat as grave as a judge, bobbing away, until soon the mouse took a strong hold of the cheese and the boy giving a sudden pull, sprang into the middle of the room and swinging the mouse around his head, astonished the whole school with exclamation, “I thwar, I’ve got him.”



# Commentary

Baxter Black, DVM



## On the edge of common sense

### The hopping horse

*“How do I love thee? Let me count the ways.”* E.B. Browning, 1857  
*“How can you get bucked off? Let me count the ways.”* B. Black, 2009

Over the years I have chronicled hundreds of horse wreck stories that have been told to me. I still marvel at the uniqueness of each one and how it stretches the imagination. One only need look through any rodeo photographer’s scrapbook to see the spectacular displays of flying bodies, nose-diving human projectiles and the continuous collection of cringing, crashing, crumpled, cart-wheeling cowboys caught catapulting on camera!

There is a fine line between getting on a horse that you hope will buck, and one that you hope won’t! At least in the bucking chute you are forewarned. Ron is an outfitter in Washington state. Packers and outfitters, in my opinion, look at horses differently than cowboys. Cowboys expect a degree of cow savvy, quickness, refinement and good looks. They might even sacrifice a little “usefulness” for a good head or pretty color. Packers put very little store in lookin’ good. I don’t mean personally. But in a horse, they want a stout one with stamina and strength. Long hair, big feet, blemishes, Roman noses, bob tails or the disposition of the Unabomber is OK as long as he packs his share of the load. After all, packers never shave either!

Bill is a carpenter with a bad back who, at the time of this story, was wearing a body cast. He asked Ron if he could put a “handle” on a new horse he had just purchased. Ron mounted the beast. From the start, it was obvious the light-colored, long-headed, round-withered, spooky-eyed devil had not spent much time in the Western Pleasure Class.

They started making circles in the round pen. Then Ron attempted a sliding stop. Hammerhead stopped abruptly and then backed up. Ron swiveled to the right, then to the left, but Hammerhead kept backing. Then he reared up on his hind legs and began hopping backwards! Ron clung like a monkey on a flagpole until he bailed out and slid off the rump where he landed on his butt in the sitting position.

He was looking up at the crazed horse, which was still hopping toward him! Ron scooted to the aft, crablike until he hit the solid uprights of the round pen. The horse crashed tail-first into the posts and sat on Ron! Bill, who had watched this circus-like performance, hobbled over to his crushed companion.

“Are you alright?” he asked.

“No,” said Ron.

“Are you sure?” asked Bill.

“Yes,” said Ron, “My leg’s broke!”

Realizing he could not lift his friend by himself, Bill ran to the barn and came back with his stall mucking wheelbarrow.

“Are you sure you can carry me in that?” asked Ron, thinking of his friend’s back.

“Yeah,” said Bill reassuringly, “I’ve hauled bigger loads of manure than you in this rig!”

— *Can’t get enough Baxter? Visit his Web site at [www.baxterblack.com](http://www.baxterblack.com) for more features, merchandise and his new book, “The World According to ... Baxter Black Quips, Quirks & Quotes”.*

Wayne Cornell

## Not important ...

*but possibly of interest*

### Over the hill at age 27



A researcher at the University of Virginia ran some tests to determine at what age people are at the peak of their mental abilities. The seven-year study involved 2,000 men and women aged 18 to 60.

According to Professor Timothy Salthouse, the tests suggest that in the categories of reasoning, speed of thought and spatial visualization, humans hit their peak at around age 22 and start to lose their mental edge at about age 27. The report also claims memory begins to decline by age 37.

The first question that came to mind after reading this bit of information was why, when just about every area of government is short of money, are tax dollars being spent on a study that anyone over 40 knows is total baloney?

My second conclusion was that the aforementioned Timothy Salthouse is (a) younger than 27 or (b) spent his entire adult life in an academic Ivory Tower and knows absolutely nothing about the Real World.

I’ll go with (b).

So age 22 is when we hit our peak? When I was that age, I’m sure I would have agreed. There were plenty of times when my parents cautioned me to think things over carefully before making some important decision. But I usually ignored their experienced-base advice and went with my instincts because I KNEW I was younger and smarter and already knew everything worth knowing. And invariably I wound up wishing I had listened to the “old folks.”

It may be that a 22-year-old thinks faster than older people. But about the time folks reach their 40s, they realize thinking fast ain’t necessarily a good thing. Life has taught them it is sometimes better to take a little time and make some decisions based on past lessons learned, not gut feelings. There’s a reason why there are T-shirts that say, “Old age and treachery will overcome youth

and skill.”

But something else bothered me about the claim that folks start going down hill mentally at age 27. Why that particular anniversary? On a hunch I did some Internet research. Sure enough, the average age people now marry in the United States is a couple of months short of 27 years.

Now some folks will probably say, “See, getting married destroys your brain!” But I disagree.

When someone is 22, they are about as “free” as they will ever get. From what I have seen, many of today’s 22-year-olds never think much farther ahead than the next weekend. When you are that age, a primary goal is to enjoy life to its fullest. It’s easy to make quick decisions because you don’t realize there are consequences for acting without thinking. And if you make the wrong decision, the only person likely to suffer is you.

But things change when you get married. Your decisions affect your family. So one tends to think things over more carefully before reaching a conclusion. There’s more at stake. In addition, when an older person is taking a mental agility test, he or she may at the same time be trying to figure out how to pay the mortgage and how to free up some extra quality time to spend with their spouse and/or kids. Life is no longer about the next weekend. It’s about how you are gonna make it through the next 30 or 40 years. That’s bound to influence how you respond to a mental agility study.

So let the 22-year-olds think they are smarter. They would believe that even without a study by some overeducated researcher. Those of us who have already been there and done that know better.

*“Experience is simply the name we give our mistakes.”*  
— **Oscar Wilde**

Sen. Mike Crapo

## From Washington

### A tax burden we cannot bear



On March 11, I reintroduced legislation to permanently extend the 15 percent tax rate (zero percent on those in the two lowest income tax brackets) on capital gains and dividends that was enacted as part of tax relief in 2003. I’ve introduced this legislation every Congress since 2005. This bill has even greater urgency now considering the president’s budget proposal before Congress that will allow the tax rates on these investment earnings to rise to 20 percent for individual filers earning more than \$200,000, and couple filers earning more than \$250,000.

First, to echo concerns of many about this budget: we shouldn’t be raising taxes during a recession. Although these rates wouldn’t take effect until 2011, announcing a rate increase on capital gains and dividends today that will go into effect in less than two years will certainly create hesitation on the part of investors. What occurs in two or five years

matters when considering long-term investments. Investors are already keeping their money on the sidelines; it seems counterintuitive, not to mention poor tax policy, to discourage investment for the future. In a challenging economy, lower-priced assets can be a wise purchase. These purchases work to turn the economy around. Allowing the lower 15 percent rate to expire in 2011 will further inhibit much-needed investment in markets today and in capital that will put our economy on the road to better health.

In general, taxes on capital gains and dividends represent double taxation — these dollars have already incurred income taxes; taxing them again when they return as gains on investments serves as a disincentive for people to invest in the first place. Broadly, these taxes discourage investment in U.S. markets — investors can turn to Germany, Hong Kong or Singapore, for example, where there

are no taxes on capital gains.

And, lest we think that taxes on capital gains and dividends affect only the very wealthy, the fact is that small businesses constitute a considerable portion of taxpayers in the income categories that my bill covers. Most small businesses aren’t required to pay the corporate income tax. Thirty-five percent of all business taxes are reported on personal income tax forms through sole proprietorships, S-Corporations and partnerships. Incidentally, this is also why top individual income tax rates matter to small businesses — a large share of small business “flow-through” income ends up being reported at these higher rates. With 60 to 80 percent of net new jobs created by small businesses, and the fact that small businesses employ more than half of the labor force and generate more than half of our Gross Domestic Product, it stands to reason

— *See **Tax**, page 21*



# Commentary

## Financial management Laid off? Hunker down to the bare necessities

Dear Dave,

Could you please give us a list of the things people need to think about and deal with if they've been laid off?

— Anonymous



Dear Anonymous,

What a great question! It's good to know you're thinking ahead. Hopefully, you won't have to face this problem, but if you do, here are a few ideas to help hold things together.

The first thing you do is take any severance pay, plus all the other money you have, and put it all in an emergency fund. You never know just how long money will be tight in a situation like this. Even if you go out immediately and find a part-time job to tide you over, you're still going to be facing a significant loss of income in the short term.

You know I love beating down debt, but at this point you need to stop paying extra on any debt you have. Yank the plug on retirement planning, too. You don't need to worry about these things when you're in the middle of a crisis! A bare-bones, detailed household budget is also a necessity. It's beans and rice time, so you've got no business seeing the inside of a restaurant or buying new stuff for a while. If you had vacation plans, put them on hold. Many times people don't want to experience the pain of a scaled-back lifestyle while they're feeling the pain of

a job loss. Often they'll turn to credit cards in this situation, and that's a *really* dumb idea!

Be on the hunt for life insurance, if you previously had it only through your employer. Everyone needs a good, level-term life insurance policy outside of what's offered at the workplace. When it comes to medical insurance, consider using a health savings account (HSA). Look for one with a high deductible and low premium. If you have a 401(k), roll it directly into an IRA with a *direct transfer rollover*. Do *not* have them send you a check! Don't ever cash out an IRA in a situation like this, unless it's absolutely necessary to avoid bankruptcy or foreclosure.

Finally, you've got to be willing to take any work that comes your way. This means even part-time jobs like delivering pizza or flip-

ping burgers. There's no shame in honest work, and losing a job isn't the end of the world. It just might be the opportunity for a great new career change!

— Dave

Dear Dave,

Do you think people should keep a certain amount of emergency cash on hand at home? It seems like this would be a good idea in case there's a national emergency or disaster situation.

— Rose

Dear Rose,

Some people do that kind of thing. I know a guy who is a multi-millionaire, and he keeps \$50,000 locked up in a safe at his home. I'm fine with that. At the same time, you shouldn't act like a scared rabbit, and tuck all your money under a mattress, or bury

it in a coffee can in the backyard, because you're afraid the world's coming to an end!

There's nothing wrong with having some cash stashed away at home. I'm all about being financially prepared. Just remember that the money you hide isn't growing or earning anything!

— Dave

— Dave Ramsey is the author of *The Total Money Makeover*. He also is the host of *The Dave Ramsey Show* that airs at 6 p.m. daily on the Fox Business Channel. You can find tools to help with finances or previous columns at [Davesays.org](http://Davesays.org). For more advice, visit the Web site or call (888) 22-PEACE. Have a question for Dave? Send correspondence to [syndication@daveramsey.com](mailto:syndication@daveramsey.com) or write Dave Says, 1749 Mallory Lane, Brentwood, TN 37027

## Letters to the editor

### Find Gateway West alternates

We are writing concerning the Idaho Power Gateway West transmission line. We are particularly concerned with the effect the line will have on the communities of Murphy, Oreana, Grand View and Bruneau. This section of the transmission line crosses a considerable amount of private property impacting several of our local farmers and ranchers. In light of our current economic situation, this is offensive and insane. These communities are surrounded by public lands. It is our strong opinion public utilities should traverse public lands and not impinge upon the hard-working, tax-paying private property owner.

We do have an alternative. There is an existing transmission line owned by PacifiCorp on the north side of the Snake River. We propose that the Gateway West Transmission Line should parallel this existing PacifiCorp line. We have made maps to illustrate our proposal. These maps are on display at the Owyhee County Planning and Zoning office, Murphy; Y-Bar Restaurant, Grand View; Bruneau Library, Bruneau. Please view our maps and communicate with your elected officials regarding this matter which so greatly impacts our communities.

Ernie Breuer and Robyn Thompson, Oreana

### Tax: Less equals more growth

— From page 20

that if these businesses see increased taxes in their future, they will make the logical business decision to downsize or cease operations altogether. If, at the very least, they can count on the tax code remaining steady as it currently stands, they can more confidently make investment decisions for the future.

Holding tax rates to historically low levels rather than increasing them to 20 percent (with no guarantee that this would be the only increase), encourages business growth by allowing businesses to keep more of their own money. Returning money through government programs distorts market choices, plain and simple.

In the midst of tax season, it's sobering to note a Tax Foundation statistic that, in 2008, Americans will spend more on taxes than they will on food, clothing and housing combined. We need to do what we can to reject any increased tax burden, and work hard to decrease the existing burden. As a member of the Senate Budget and Finance Committees, I will continue to fight for these priorities.

William Pendley Perry

## Summary Judgment

### Students seek right for concealed carry on campus



One minute, Suzanna was eating lunch with her mother and father. The next, the happy hubbub of the restaurant was silenced when a pickup truck crashed through the brick, mortar, and glass. How could that happen? The driver emerged, but Suzanna noticed he wasn't dazed or drunk; he was angry and purposeful. Then, she saw the guns. He stepped over the debris and began to shoot patrons. She must be dreaming. Her father leaped to his feet, charged the gunman, was shot, and fell to the floor. When the gunman turned his back to shoot others, she remembered: she had a gun! Where was it? She had to find her gun! Oh no, it was in her car. She crawled, then ran toward a window to escape, to get her gun, and to return to save her mother. Was it only a nightmare?

Tragically, for Suzanna Gratia Hupp and scores of others, the murder and mayhem on Oct. 16, 1991, at Luby's Cafeteria in Killeen, Texas — 60 miles north of Austin — was real: 23 men and women were murdered in cold blood; another 20 were wounded in the deadliest killing spree in American history. (The killer turned one of his two weapons upon himself when cornered by the police.) Dr. Hupp, a chiropractor, had indeed brought her gun to Luby's that day; however, it was illegal then to carry a concealed weapon in Texas. Despite the admonition of a friend, "Better to be tried by 12 than carried by six," she feared losing her license if she violated the law. Instead, she lost both her father and her mother; she had thought her mother would follow her through the window, but her mother had returned to comfort her dying husband and had been murdered. Dr. Hupp blames herself to this day.

As a result, Dr. Hupp became one of the nation's leading advocates for concealed carry permits; in fact, at her urging, in 1995 the Texas Legislature adopted a "shall-issue" gun law requiring all qualifying applicants to be issued a Concealed Handgun License. In 1996, she was elected to the Texas House of Representatives, then traveled the country giving testimony why states should enact

concealed carry laws. Most recently, she filed a friend of the court brief when the Supreme Court considered the constitutionality of Washington, D.C.'s ban on handguns for personal safety, *District of Columbia v. Heller*.

One of the states that enacted the law advocated by Dr. Hupp was Colorado, which, in 2003 created statewide standards for issuing concealed carry permits, adopted a narrow list of exclusions — locations prohibited by federal law; K-12 schools; public buildings with metal detectors; and private property — and prohibited local governments from enforcing any contradictory laws and policies. Despite the Colorado General Assembly's intent to supplant local rules as to concealed carry, the Regents of the University of Colorado refused to withdraw their 1994 policy barring concealed carry on CU's campuses throughout the state.

The massacre that killed Dr. Hupp's parents was the deadliest shooting rampage in American history. That is, until the Virginia Tech Massacre of April 17, 2007, when 32 were killed and 17 wounded. Subsequently, on Feb. 14, 2008, a gunman killed six and wounded 18 at Northern Illinois University. Little wonder, therefore, that students on CU's campuses in Boulder, Denver, and Colorado Springs — who have a license to carry concealed weapons almost anywhere else in Colorado — wish to exercise that right in what, in their view, is one of the most dangerous settings they will encounter: "a gun-free zone."

Students for Concealed Carry on Campus (SCCC), a national advocacy group with more than 30,000 members that supports the legalization of concealed carry by licensed individuals on college campuses, agrees. Last month, SCCC, two CU students and a recent CU graduate filed a lawsuit in Colorado state court seeking a ruling that CU's policy is illegal and unconstitutional.

— William Perry Pendley is president and chief legal officer for the Lakewood, Colo.-based Mountain States Legal Foundation.

[www.owyheeavalanche.com](http://www.owyheeavalanche.com)



# Public notices

**NOTICE OF PUBLIC HEARING**

Please be advised that a public hearing will be held before the Council and Mayor of the City of Homedale on the 23<sup>rd</sup> day of April, 2009 at 6:00 p.m. at Homedale City Hall, 31 West Wyoming, Homedale, Idaho.

The subject matter of this hearing is:

1. Ordinance amending the Homedale Zoning ordinance to add a new section concerning temporary commercial use licenses and transient merchant licenses, amending ordinance 309 by adding a provision making this ordinance controlling with regard to temporary commercial uses, amending ordinance no. 65 by adding provisions relating to vendors and food vendors, and incorporating recommended changes of the Planning and Zoning Commission regarding the use of temporary model homes to not be limited to garages, to eliminate references to drive up services, to place responsibility for prosecution of section 1 upon the City Attorney, and to require copies of various approvals and permissions under section 1 to be provided to the City during the application process.

2. A m e n d e d Zoning Ordinance, to add airport hanger as allowed use in an industrial zoned area

3. An Ordinance for the Adoption of the 2006 International Building Code.

A copy of the proposed ordinances can be reviewed at Homedale City Hall.

The public is invited to attend and offer input.

Alice E. Pegram  
City Clerk/Treasurer  
City of Homedale (208-337-4641)  
4/01/09

**FOR SALE BY BID**

Notice is hereby given, that the Board of Commissioners of the Homedale Rural Fire Protection District, Owyhee and Canyon Counties, State of Idaho, hereby call for bids for a 1994 ambulance. The District will be accepting sealed bids for the 1994 Medtec 1 Ambulance Ford F-350, 7.3 Turbo Diesel, approximately 51,000 miles, 2250 hours, power windows, AC, auto transmission, on board batter charger, 1UHF radio included, 1 VHF radio port only, gurney not included. To inspect this ambulance, please call 208-337-3271.

Bids must be received by no later than 11:00 a.m. on April 13, 2009. Bids may be mailed to the Homedale Rural Fire Protection District, PO Box 905, Homedale, ID 83628 or delivered to the office of Bowen Parker Day, CPAs, Chtd, 19 E. Wyoming, Homedale.

Mikeal D. Parker  
Secretary/Treasurer  
3/25;4/1/09

**NOTICE OF SCHOOL TRUSTEE ELECTION DECLARATION OF CANDIDACY HOMEDALE JOINT SCHOOL DISTRICT NO. 370**

**CANYON AND OWYHEE COUNTIES, IDAHO**

Public Notice is hereby given according to law, and the requiste action of the Board of Trustees of Homedale Joint School District No. 370, Canyon and Owyhee Counties, Idaho, that the annual school trustee election will be held on May 19, 2009. Candidates interested in filing a declaration of candidacy must file not later than 5:00 pm on April 17, 2009.

Only those qualified electors residing in Trustee Zone #2 may declare candidacy for a Zone #2 trustee position. The purpose of said election shall be to elect one trustee to serve for a period of three years from the date of the election one trustee who resides within trustee zone #2.

Trustee Zone #2 is more speicifically described as follows:

TRUSTEE ZONE 2 --- Beginning at the intersection of the western district boundary with Succor Creek. East on Succor Creek to Idaho Ave. East on Idaho Ave. to the city limits of Homedale at Johnstone Rd. South on Johnstone Rd. to the point where the city limits depart to the east. Easterly on the city limits to U.S. Highway 95 then south along U.S. Highway 95 to Pioneer Rd. East on Pioneer Rd. and Pioneer Rd. extended east to the Snake River. Southeast on the Snake River to the east district boundary. South along the east district boundary. West along the south district boundary. North along the west district boundary to the beginning

Declaration of candidacy must be filed with the Clerk of the Board of Trustees not later than 5:00 pm on the fifth Friday prior to the day of election (to wit: April 17, 2009). Each declaration of candidacy must bear the name of the candidate, state the term for which declaration of candidacy is made, and bear the signature of not less than five (5) school district electors resident of the trustee zone of which the candidate is resident.

As provided by Idaho Code, Section 33-502A no write-in vote shall be counted unless a declaration of intent has been filed with the District Clerk indicating that the person desires the office and is legally qualified to assume the duties of school trustee if elected. The declaration of intent shall be filed not later than fourteen (14) days before the day of election.

Under order of the Board of Trustees  
/s/Faith K. Olsen, Clerk  
4/1,8/09

**The following application(s) have been filed to appropriate the public waters of the State of Idaho: 51-13040**

US DEPT OF INTERIOR, BUREAU OF LAND MANAGEMENT, LOWER SNAKE RIVER DISTRICT, 3948 DEVELOPMENT AVE, BOISE ID 83705

Point(s) of Diversion NWNW S9 T10S R02E OWYHEE County Source GROUND WATER

Use: STOCKWATER 01/01 To 12/31 0.05 CFS

Use: WILDLIFE 01/01 To 12/31 0.05 CFS

Total Diversion: 0.05 CFS  
Date Filed: 07/28/2008

Place Of Use:

STOCKWATER

T09S R02E S30 NWNW Lot 1

T09S R02E S31 NWNE

T10S R02E S2 NWSW  
T10S R02E S5 SWNE  
T10S R02E S8 NWNE  
Place Of Use: WILDLIFE  
SAME AS STOCKWATER

Permits will be subject to all prior water rights. Protests may be submitted based on the criteria of Sec 42-203A, Idaho Code. Any protest against the approval of this application must be filed with the Director, Dept. of Water Resource, Western Region, 2735 Airport Wy, Boise ID 83705 together with a protest fee of \$25.00 for each application on or before 04/20/2009. The protestant must also send a copy of the protest to the applicant.

DAVID R. TUTHILL, JR.,  
Director  
4/1,8/09

**The following application(s) have been filed to appropriate the public waters of the State of Idaho: 55-13886**

US DEPT OF INTERIOR, BUREAU OF LAND MANAGEMENT, LOWER SNAKE RIVER DISTRICT, 3948 DEVELOPMENT AVE, BOISE ID 83705

Point(s) of Diversion  
SEWNW S27 T09S R01E  
OWYHEE County Source  
SPRING

Tributary To BATTLE CREEK

Use: STOCKWATER 01/01 To 12/31 0.02 CFS

Use: WILDLIFE 01/01 To 12/31 0.02 CFS

Total Diversion: 0.02 CFS  
Date Filed: 09/11/2008

Place Of Use:

STOCKWATER

T09S R01E S27 NWNE

Place Of Use: WILDLIFE

SAME AS STOCKWATER

Permits will be subject to all prior water rights. Protests may be submitted based on the criteria of Sec 42-203A, Idaho Code. Any protest against the approval of this application must be filed with the Director, Dept. of Water Resource, Western Region, 2735 Airport Wy, Boise ID 83705 together with a protest fee of \$25.00 for each application on or before 04/20/2009. The protestant must also send a copy of the protest to the applicant.

DAVID R. TUTHILL, JR.,  
Director  
4/1,8/09

**NOTICE OF ANNUAL MEETING**

Notice is hereby give that a meeting of the members of the MARSING COMMUNITY DISASTER FUND, an association will be held at eight (8:00 p.m.) o'clock p.m., Tuesday, April 7, 2009 at the MARSING COMMUNITY CENTER for the purpose of electing (3) directors for a term of three years. One (1) each from the communities of Jump Creek Area, Lakeview Area and (1) for Director at Large from within the Association boundaries, for the election of officers for the Association and any other business relative to the Annual Meeting. Thomas Ineck, Association Secretary  
4/01/09

**NOTICE OF DEADLINE FOR FILING DECLARATION OF CANDIDACY MARSING JOINT SCHOOL DISTRICT NO. 363 MARSING, IDAHO 83639**

Notice is hereby given that the deadline for filing nominating petitions for the election of one (1) Trustee for a term of three

(3) years from Trustee Zone 1, not later than 5:00 p.m., Friday, April 17, 2009. The election will be held on May 19, 2009. Any person legally qualified to hold the office of school trustee in Joint School District No. 363, Marsing, Idaho, may file a declaration of candidacy for the office, each of which shall bear the name of the candidate, state the term for which the declaration of candidacy is made, and bear the signature of not less than five (5) school district electors resident of the trustee zone of which the candidate is resident. A declaration of candidacy may be obtained at the School District Administration Office, Highway 78, Marsing, Idaho. The declaration shall be filed with the Clerk of the Board of Trustees of school district not later than 5:00 p.m. on the fifth Friday preceding the day of election of trustees.

Deborah Holzhey, Clerk, Board of Trustees, Joint School District 363, Marsing, Idaho  
4/1,8/09

**NOTICE OF HEARING CASE NO. CV09-0992 IN THE DISTRICT COURT FOR THE THIRD JUDICIAL DISTRICT OF THE STATE OF IDAHO AND IN FOR THE COUNTY OF OWYHEE**

IN RE: Margie ByBee Jess

A petition by Margie ByBee Jess born on 12-6-52 in Twin Falls, Idaho now residing in Grand View, proposing a change in name to ByBee has been filed in the above entitled court, the reason for this change in name being George A. Jess and I have separated.

The petitioner's father has died and the names of the petitioner's near relatives are: Ray Colyer, Lola Blossom

Such petition will be heard at 11:30 o'clock a.m. on April 6, 2009, in courtroom number 1 at the Owyhee County Courthouse in Murphy. Objections may be filed by any person who can, in such objections, show to the court a good reason against such a change of name.

Witness my hand and seal of said District Court this 26<sup>th</sup> day of February, 2009.

Charlotte Sherburn, Clerk of the District Court

By Lena Johnson, Deputy Clerk  
3/11,18,25;4/1/09

**NOTICE OF TRUSTEE'S SALE**

Notice of Trustee's Sale Loan No. 0730015377 T.S. No. ID-09-233861-TD On 7/15/2009, at 11:00:00 AM (Recognized local time), at the following location in the County of OWYHEE, State of Idaho: In the lobby of the Owyhee County Courthouse located on the corner of Highway 78 and Halley Street, known as 20381 Highway 78, Murphy, ID 83650, Pioneer Lender Trustee Services, LLC an Idaho limited liability company, as Trustee on behalf of CitiBank NA, as trustee for WaMu Series 2007-HE3 Trust will sell at public auction, to the highest bidder, for cash, in lawful money of the United States, all payable at the time of sale, the following real property, situated in the County of OWYHEE State of Idaho, and described as follows: THE EAST HALF OF THE NORTHWEST QUARTER OF THE NORTHWEST QUARTER OF SECTION 12, IN TOWNSHIP 1 NORTH, RANGE 4 WEST, BOISE MERIDIAN,

OWYHEE COUNTY, IDAHO. The Trustee has no knowledge of a more particular description of the above referenced real property, but for purposes of compliance with Section 60-113 Idaho Code, the Trustee has been informed that the address of 7823 SOMMERCAMP ROAD, MELBA, ID 83641 is sometimes associated with said real property. Said sale will be made without covenant or warranty regarding title, possession or encumbrances to satisfy the obligation secured by and pursuant to the power of sale conferred in the Deed of Trust executed by MICHAEL J COOK, AN UNMARRIED MAN as Grantor/Trustor, in which WASHINGTON MUTUAL BANK, is named as Beneficiary and LENDER SERVICES DIRECT INC. as Trustee and recorded 2/28/2007 as Instrument No. 260008 in book -, page - of Official Records in the office of the Recorder of OWYHEE County, Idaho. Please Note: The above Grantors are named to comply with section 45-1506(4)(A), Idaho Code, No representation is made that they are, or are not, presently responsible for this obligation set forth herein. The Default for which this sale is to be made is the failure to pay when due, under Deed of Trust and Note dated 2/14/2007. The monthly installments of principal, interest, and impounds (if applicable) of \$1,825.01, due per month for the months of 9/1/2008 through 2/6/2009, and all subsequent installments until the date of sale or reinstatement. The principal balance owing as of this date on the obligation secured by said Deed of Trust is \$239,049.16 together with interest thereon at the current rate of 8.3000 per cent (%) per annum from 8/1/2008. All delinquent amounts are now due, together with accruing late charges, and interest, unpaid and accruing taxes, assessments, trustee's fees, attorney's fees, and any amounts advanced to protect the security associated with this foreclosure and that the beneficiary elects to sell or cause the trust property to be sold to satisfy said obligation. If the Trustee is unable to convey title for any reason, the successful bidder's sole and exclusive remedy shall be the return of monies paid to the Trustee, and the successful bidder shall have no further recourse. Date: 3/16/2009 By: Pioneer Lender Trustee Services, LLC an Idaho limited liability company, as Trustee Quality Loan Service Corp. of Washington, as Agent 2141 5th Avenue San Diego, CA 92101 Tara Donzella, Assistant Vice President \*\*\*For Sale Information Call: 714-730-2727 or Login to: www.fidelityasap.com If you have previously been discharged through bankruptcy, you may have been released of personal liability for this loan in which case this letter is intended to exercise the note holder's rights against the real property only. THIS IS AN ATTEMPT TO COLLECT A DEBT AND ANY INFORMATION OBTAINED WILL BE USED FOR THAT PURPOSE. As required by law, you are hereby notified that a negative credit report reflecting on your credit record may be submitted to a credit report agency if you fail to fulfill the terms of your credit obligations. ASAP# 3034557

4/1,8,15,22/09



# Public notices

**LIEN SALE**

1983 Ford pickup vin# 1FTCF1039DPB06780 and 1986 Ford Mustang vin# 1FABP26A4GF184842. All vehicles may be previewed one hour before sale, April 15, 2009 at 2:00pm, 11 W. Idaho, Homedale, ID 83628  
3/25;4/1/09

**NOTICE OF TRUSTEE’S SALE**

**IDAHO CODE 45-1506**  
Loan No.: **LTE 187410**  
T.S. No. **10078.1472**  
TSG No.: **200901655**  
On **7/6/2009** at **11:00 AM** (recognized local time), **At the entrance to the Owyhee County courthouse located at 20381 State Hwy 78, Murphy, ID 83650.** In the County of **Owyhee**, State of Idaho, Pioneer Lender Trustee Services, LLC as Trustee on behalf of the beneficiary will sell at public auction, to the highest bidder, for cash, in lawful money of the United States, all payable at the time of sale, the following described real property, situated in the County of **Owyhee**, State of Idaho, and described as follows:

**See legal description attached hereto and made part hereof**

The Trustee has no knowledge of a more particular description of the above referenced real property, but for purposes of compliance with Section 60-113 Idaho Code, the Trustee has been informed that the address of: **3407 US Highway 95, Homedale, ID 83628**, is sometimes associated with said real property. Said sale will be made without covenant or warranty regarding title, possession or encumbrances to satisfy the obligation secured by and pursuant to the power of sale conferred in the Deed of Trust executed by: **Gregory T. Lyon and Diana L. Lyon, Husband and Wife**, As grantors, To: **Pioneer Title Company of Canyon County, an Idaho Corporation**, As Trustee, for the benefit and security of **Paul J. Fink and Janet A. Fink, husband and wife**, As Beneficiary, dated **3/31/2004**, recorded **4/8/2004**, as Instrument No. **247363**, records of **Owyhee County, Idaho**.

**Please Note:** The above Grantors are named to comply with section 45-1506(4)(A), ID Code, No representation is made that they are, or are not, presently responsible for this obligation set forth herein.

The Default for which this sale is to be made is the failure to pay when due, under Deed of Trust and Note dated **3/31/2004. INSTALLMENT OF PRINCIPAL AND INTEREST PLUS IMPOUNDS AND / OR ADVANCES WHICH BECAME DUE On 1/10/2009 PLUS LATE CHARGES, AND ALL SUBSEQUENT INSTALLMENTS OF PRINCIPAL, INTEREST, BALLOON PAYMENTS, PLUS IMPOUNDS AND/ OR ADVANCES AND LATE CHARGES THAT BECOME**

**PAYABLE.** The principal balance owing as of this date on the obligation secured by said Deed of Trust is **\$347,644.07**, plus accrued interest at the rate of **6%** per annum from **12/19/2008**. All delinquent amounts are now due, together with accruing late charges, and interest, unpaid and accruing taxes, assessments, trustee’s fees, attorney’s fees, and any amounts advanced to protect the security associated with this foreclosure and that the beneficiary elects to sell or cause the trust property to be sold to satisfy said obligation.  
Dated: **February 25, 2009**

By: Pioneer Title Company of Canyon County, By Pioneer Lender Trustee Services, LLC, Its authorized agent Amy L. Bowles, Assistant Trustee Officer

**EXHIBIT A**

The East 45.90 feet of Lot 14 and all of Lot 15 of Wretling Addition to the City of Homedale, Idaho, in the Northeast Quarter of the Southeast Quarter of Section 9, Township 3 North, Range 5 West, Boise Meridian, more particularly described as follows:

COMMENCING at the Northeast corner of the Northeast Quarter Southeast Quarter of Section 9, Township 3 North, Range 5 West, Boise Meridian; thence

South 89°48’ West 276.00 feet, along the North line of the said Northeast Quarter of the Southeast Quarter; thence

South 0°26’ East 38.50 feet, parallel to the East line of the said Northeast Quarter of the Southeast Quarter, to the Northwest corner of said Lot 14; thence

South 63°12’10” East 56.37 feet along the Northerly line of said Lot 14 to the INITIAL POINT of this description; thence continue

South 63°12’10” East 113.59 feet along the Northerly line of said Lots 14 and 15; thence

South 38°17’ East 149.73 feet along the Northeasterly line of said Lot 15; thence

South 0°26’ East 72.00 feet, along the East line of said Lot 15 parallel to the East line of the said Northeast Quarter of the Southeast Quarter to the Southeast corner of said Lot 15; thence

South 89°48’ West 192.90 feet along the South line of said Lots 14 and 15; thence

North 0°26’ West 241.40 feet parallel to the East line of said Northeast Quarter of the Southeast Quarter to the INITIAL POINT of this description.  
4/1,8,15,22/09

**NOTICE OF TRUSTEE’S SALE**

T.S. No.: ID-09-242861-TD  
Loan No.: 0002915962  
On 7/2/2009 at 11:00 AM (recognized local time), at the following location in the County of In the lobby of the Owyhee County Courthouse located on the corner of Highway 78 and Hailey Street, known as 20381 Highway 78, Murphy, ID 83650, First American Title Insurance Company, as Trustee, on behalf of Amtrust

Bank will sell at public auction, to the highest bidder, for cash, in lawful money of the United States, all payable at the time of sale, the following real property, situated in the County of Owyhee, State of Idaho, and described as follows: This parcel is a portion of the Northwest Quarter of the Northwest Quarter of Section 34, Township 3 North, Range 4 West of the Boise Meridian, Owyhee County, Idaho, and is more particularly described as follows: COMMENCING at the Northwest corner of said Northwest Quarter of the Northwest Quarter, a found brass cap monument; Thence South 0°13’20” East along the West boundary of said Northwest Quarter of the Northwest Quarter a distance of 492.64 feet to the TRUE POINT OF BEGINNING, a ½ x 24 inch rebar set with a plastic cap stamped L.S. 3627; Thence North 88°14’17” East a distance of 485.07 feet to a point on the centerline of an existing concrete irrigation ditch witnessed by a 1/2 x 24 inch rebar set with a plastic cap stamped L.S. 3627 bearing South 88°14’17” West a distance of 3.00 feet; Thence South 19°32’40” East along said ditch a distance of 182.31 feet to a point witnessed by a found 1/2 inch diameter rebar bearing South 89°54’00” West a distance of 3.00 feet; Thence South 89°54’00” West a distance of 545.22 feet to a point on the West boundary of said Northwest Quarter of the Northwest Quarter, a found 1/2 inch diameter rebar; Thence North 0°13’20” West along said West boundary a distance of 15784 feet to the TRUE POINT OF BEGINNING. FURTHER STATED: THERE SHALL BE NO MANUFACTURED HOME ON THS PROPERTY.. The Trustee has no knowledge of a more particular description of the above referenced real property, but for purposes of compliance with Section 60-113 Idaho Code, the Trustee has been informed that the address of South Half of Tax 61 in 34 3N #4W, Marsing, ID 83639 is sometimes associated with said real property. Said sale will be made without covenant or warranty regarding title, possession or encumbrances to satisfy the obligation secured by and pursuant to the power of sale conferred in the Deed of Trust executed by Dustin S. Mori and Angela L. Mori, husband and wife, as Grantor/Trustor, in which Mortgage Electronic Registration Systems, Inc., (“MERS”), as nominee for Construction Capital Source, LC, is named as Beneficiary and Alliance Title and Escrow Corp. as Trustee and recorded 3/21/2007, as Instrument No. 260293 in book -, page - of Official Records in the office of the Recorder of Owyhee County, Idaho. Please Note: The above Grantors are named to comply with section 45-1506(4)(A), Idaho Code, No representation is made that they are, or are not, presently responsible for this obligation set forth herein. The Default for which this sale is to be made is the failure

to pay when due, under Deed of Trust and Note dated 3/20/2007. The monthly installments of principal interest and impounds (if applicable) of \$465.17, due per month for the months of 11/1/2008 through 2/20/2009, and all subsequent installments until the date of sale or reinstatement. The principal balance owing as of this date on the obligation secured by said Deed of Trust is \$60,473.00 together with interest thereon at the current rate of 8.3750 per cent (%) per annum from 10/1/2008. All delinquent amounts are now due, together with accruing late charges, and interest, unpaid and accruing taxes, assessments, trustee’s fees, attorney’s fees, and any amounts advanced to protect the security associated with this foreclosure and that the beneficiary elects to sell or cause the trust property to be sold to satisfy said obligation. If the Trustee is unable to convey title for any reason, the successful bidder’s sole and exclusive remedy shall be the return of monies paid to the Trustee, and the successful bidder shall have no further recourse. Dated: 3/2/2009 By: First American Title Insurance Company, as Trustee Quality Loan Service Corp. of Washington, as Agent 2141 5th Avenue San Diego, CA 92101 By: Tara Donzella, Assistant Secretary \*\*\*For Sale Information Call: 714-730-2727 or Login to: www.fidelityasap.com If you have previously been discharged through bankruptcy, you may have been released of personal liability for this loan in which case this letter is intended to exercise the note holder’s rights against the real property only. This is an attempt to collect a debt and any information obtained will be used for that purpose. As required by law, you are hereby notified that a negative credit report reflecting on your credit record may be submitted to a credit report agency if you fail to fulfill the terms of your credit obligations. ASAP# 3016096  
3/18,25;4/1,8/09

**NOTICE OF TRUSTEE’S SALE**

**IDAHO CODE 45-1506**  
Loan No.: **216520** T.S. No.: **10078.1417** TSG No.: **200810420**

On **4/30/2009** at **11:00 AM** (recognized local time), **At the entrance to the Owyhee County courthouse located at 20381 State Hwy 78, Murphy, ID 83650.** In the County of **Owyhee**, State of Idaho, Pioneer Lender Trustee Services, LLC as Trustee on behalf of the beneficiary will sell at public auction, to the highest bidder, for cash, in lawful money of the United States, all payable at the time of sale, the following described real property, situated in the County of **Owyhee**, State of Idaho, and described as follows:

**Parcel I: Lot 30 of Block 60 of the Amended Townsite Plat of HOMEDALE, Owyhee County, Idaho, according to the official plat thereof on file and of record**

**in the office of the Recorder for Owyhee County, Idaho.**

**Parcel II: Lot 31 of Block 60 of the Amended Townsite Plat of HOMEDALE, Owyhee County, Idaho, according to the official plat thereof on file and of record in the office of the Recorder for Owyhee County, Idaho.**

The Trustee has no knowledge of a more particular description of the above referenced real property, but for purposes of compliance with Section 60-113 Idaho Code, the Trustee has been informed that the address of: **Property is a parcel of land, for more information please contact Amy Bowles at 208-373-3626**, is sometimes associated with said real property. Said sale will be made without covenant or warranty regarding title, possession or encumbrances to satisfy the obligation secured by and pursuant to the power of sale conferred in the Deed of Trust executed by: **Pick up the Pace of Homedale, LLC**, As grantors, To: **Pioneer Title Company of Canyon County, By; Pioneer Lender Trustee Services, LLC**, As its authorized agent, for the benefit and security of **Rolf Dornseif**, As Beneficiary, dated **8/3/2005**, recorded **6/1/2006**, as Instrument No. **254711**, records of **Owyhee County, Idaho**.

**Please Note:** The above Grantors are named to comply with section 45-1506(4)(A), ID Code, No representation is made that they are, or are not, presently responsible for this obligation set forth herein.

The Default for which this sale is to be made is the failure to pay when due, under Deed of Trust and Note dated **8/3/2005. INSTALLMENT OF PRINCIPAL AND INTEREST PLUS IMPOUNDS AND / OR ADVANCES WHICH BECAME DUE On 10/12/2008 PLUS LATE CHARGES, AND ALL SUBSEQUENT INSTALLMENTS OF PRINCIPAL, INTEREST, BALLOON PAYMENTS, PLUS IMPOUNDS AND/ OR ADVANCES AND LATE CHARGES THAT BECOME PAYABLE.** The principal balance owing as of this date on the obligation secured by said Deed of Trust is **\$40,160.99**, plus accrued interest at the rate of **18%** per annum from **10/2/2008**. All delinquent amounts are now due, together with accruing late charges, and interest, unpaid and accruing taxes, assessments, trustee’s fees, attorney’s fees, and any amounts advanced to protect the security associated with this foreclosure and that the beneficiary elects to sell or cause the trust property to be sold to satisfy said obligation.

Dated: **December 23, 2008**  
By: **Pioneer Title Company of Canyon County**

**By; Pioneer Lender Trustee Services, LLC**

**Its authorized agent Amy L. Bowles, Assistant Trustee Officer**  
3/18,25;4/1/09



## The Owyhee Avalanche

Your source for Owyhee County news and views since 1865

Phone (208) 337-4681      P.O. Box 97, Homedale, ID 83628      www.theowyheearavanche.com







# Public notices

as provided by the Deed of Trust or Deed of Trust Note, or by Idaho law.  
Dated this 10<sup>th</sup> day of March, 2009.

By: Mark D. Perison – of the Firm, Attorneys for Trustee, P.O. Box 6575, Boise, ID 83707-6575. (208) 331-1200  
3/25;4/1,8,15/09

**NOTICE OF TRUSTEE’S SALE**

NOTICE IS HEREBY GIVEN that on July 10, 2009, at the hour of 11:30 a.m. of said day, on the steps of the Owyhee County Courthouse, located at the corner of Highway 78 and Hailey Street, Murphy, Owyhee County, Idaho, the Trustee, Alliance Title & Escrow Corp. will sell at public auction to the highest bidder, for cash in lawful money of the United States of America, all payable at the time of sale, the following described real property situated in the County of Owyhee, State of Idaho, and described as follows, to-wit:

Lots 1 and 2 in Block 31 of the Homedale, Owyhee County, Idaho.

The Trustee has no knowledge of a more particular description of the above described real property, but for purposes of compliance with Idaho Code Section 60-113, the Trustee has been informed that the street address of 301 W. ARIZONA, HOMEDALE, IDAHO, may sometimes be associated with said real property.

Said sale will be made, without covenant or warranty regarding title, possession or encumbrances, to satisfy the obligation secured by and pursuant to the power of sale conferred in the Deed of Trust executed by DOROTHY POPE, a married woman as her sole and separate property, as Grantor, and ALLIANCE TITLE & ESCROW, as Trustee, and HOPKINS MORTGAGE FUND, LLC, an Idaho Limited Liability Company “as trustee for the benefit on a parity for all Series “A” Debenture Holders,” as Beneficiary; said Deed of Trust having been filed of record on July 23, 2007, as Instrument No. 261828, Official Records of Owyhee County, Idaho. The naming of the above Grantor(s) is done to comply with Idaho Code Section 45-1506(4)(a); no representation is made as to the responsibility of Grantor(s) for this obligation.

The default for which the sale is to be made is that no monthly installment payments under a Deed of Trust Note dated July 23, 2007, in the amount of \$544.66 per month for October 2008 and each month thereafter have been made, together with accruing late charges, plus any other charges lawfully due under the note, deed of trust, and Idaho law.

The balance owing as of the date hereof on the obligation secured by said Deed of Trust is the amount of \$55,437.27 in principal; plus accrued interest at the rate of eleven and one-half percent (11.5%) per annum from September 23, 2008; plus default interest pursuant to the Note at the rate of five percent (5%) per annum from December 1, 2008, until the default is cured; plus service charges, late charges, and any other costs or expenses associated with this foreclosure as provided by the Deed of Trust or Deed of Trust Note, or by Idaho law.

Dated this 11<sup>th</sup> day of March, 2009.

By: Mark D. Perison – of the Firm, Attorneys for Trustee, P.O. Box 6575, Boise, ID 83707-6575. (208) 331-1200  
3/25;4/1,8,15/09

**NOTICE OF TRUSTEE’S SALE**

NOTICE IS HEREBY GIVEN that on July 10, 2009, at the hour of 11:15 a.m. o’clock a.m. of said day, on the steps of the Owyhee County Courthouse, located at the corner of Highway 78 and Hailey Street, Murphy, Owyhee County, Idaho, the Trustee, Alliance Title & Escrow Corp. will sell at public auction to the highest bidder, for cash in lawful money of the United States of America, all payable at the time of sale, the following described real property situated in the County of Owyhee, State of Idaho, and described as follows, to-wit:

See attached Exhibit “A”

The Trustee has no knowledge of a more particular description of the above described real property, but for purposes of compliance with Idaho Code Section 60-113, the Trustee has been informed that the street address of 216 W. ARIZONA AVENUE, HOMEDALE, IDAHO, may sometimes be associated with a portion of said real property. Information concerning the location of the remainder of the property may be obtained from Mark D. Perison, P.A., 314 S. 9th Street, Suite 300, Boise, Idaho, (208) 331-1200.

Said sale will be made, without covenant or warranty regarding title, possession or encumbrances, to satisfy the obligation secured by and pursuant to the power of sale conferred in the Deed of Trust executed by DOROTHY E. POPE, a married woman as her sole and separate property, as Grantor, and ALLIANCE TITLE AND ESCROW, as Trustee, and HOPKINS WESTERN FUND, LLC, an Idaho Limited Liability Company “as trustee for the benefit on a parity for all Series “W” Debenture Holders,” as Beneficiary; said Deed of Trust having been filed of record on November 13, 2007, as Instrument No. 263054, Official Records of Owyhee County, Idaho. The terms of said Deed of Trust and a companion Promissory Note were modified by a Modification Agreement recorded November 17, 2008, as Instrument No. 266716, Official Records of Owyhee County, Idaho; and were further modified by a Modification Agreement recorded November 17, 2008, as Instrument No. 266720. The naming of the above Grantor(s) is done to comply with Idaho Code Section 45-1506(4) (a); no representation is made as to the responsibility of Grantor(s) for this obligation.

The default for which the sale is to be made is that a breach of the obligation for which the transfer in trust is security has occurred, in that the Deed of Trust Note secured by the above-mentioned deed of trust has now fully matured and is due and payable. The amount due consists of principal in the amount of \$89,212.00, plus interest thereon at the rate of eleven and one-half percent (11.5%) from September 28, 2008 forward, plus default interest at the rate of five percent (5%) from December 8, 2008 forward, together with service charges, late charges, and any other costs, fees, or expenses incurred by the Beneficiary and/or Trustee associated with this fore-

closure as provided by the Deed of Trust or deed of trust note, or by Idaho law.

Dated this 10<sup>th</sup> day of March, 2009.

By: Mark D. Perison – of the Firm, Attorneys for Trustee, P.O. Box 6575, Boise, ID 83707-6575. (208) 331-1200

EXHIBIT A  
Parcel I:

Parcel Lot 13, Block 35, Amended Townsite Plat of Homedale, Owyhee County, Idaho, according to the official plat thereof on file and of record in the office of the Recorder for Owyhee County, Idaho.

Parcel II:

This parcel is a portion of the North One-Half of the Northeast Quarter of the Southeast Quarter of Section 9, Township 3 North, Range 5 West of the Boise Meridian, Owyhee County, Idaho and is more particularly described as follows:

COMMENCING at the Northwest corner of said North One-half of the Northeast Quarter of the Southeast Quarter; thence

South 00°21’13” East along the West boundary of said North One-Half of the Northeast Quarter of the Southeast Quarter a distance of 305.51 feet; thence

North 90°00’00” East parallel with the North boundary of said North One-Half of the Northeast Quarter of the Southeast Quarter a distance of 896.61 feet to the TRUE POINT OF BEGINNING; thence continuing

North 90°00’00” East parallel with said North boundary a distance of 243.00 feet; thence

South 00°00’00” East perpendicular to the North boundary of said North One-Half of the Northeast Quarter of the Southeast Quarter a distance of 98.53 feet; thence

South 88°49’03” West a distance of 65.46 feet; thence

South 00°00’00 East perpendicular to the North boundary of said North One-Half of the Northeast Quarter of the Southeast Quarter a distance of 74.62 feet; thence

South 90°00’00” West parallel with the North boundary of said North One-Half of the Northeast Quarter of the Southeast Quarter a distance of 177.55 feet; thence

North 00°00’00” East perpendicular to the North boundary of said North One-Half of the Northeast Quarter of the Southeast Quarter a distance of 174.50 feet to the TRUE POINT OF BEGINNING.

Parcel III:

An easement for ingress, egress and public utilities over the South 20 feet of the following described parcel:

This parcel is a portion of the North One-Half of the Northeast Quarter of the Southeast Quarter of Section 9, Township 3 North, Range 5 West of the Boise Meridian, Owyhee County, Idaho, and is more particularly described as follows:

COMMENCING at the Northwest Corner of said North One-Half of the Northeast Quarter of the Southeast Quarter of the Southeast Quarter; thence

South 00°21’13” East along the West boundary of said North One-Half of the Northeast Quarter of the Southeast Quarter a distance of 305.51 feet; thence

North 90°00’00” East parallel with the North boundary of said North One-Half of the Northeast Quarter of the Southeast Quarter a distance of 1139.61 feet to the TRUE POINT OF BEGINNING; thence continuing

North 90°00’00” East parallel

with said North boundary a distance 127.17 feet to a point on the Westerly right-of-way of U.S. Highway 95, said point being

South 53°50’36” East a distance of 0.73 feet from a two-inch aluminum monument: thence along said Westerly right-of-way along a curve to the right with an arc length of 16.52 feet, a radius of 268.60 feet, a central angle of 03°31’28”, and a long chord which bears

South 01°59’50” East a distance of 16.52 feet; thence

South 00°14’06” East along said Westerly right-of-way a distance of 79.38 feet; thence

South 88°49’03” West a distance of 128.11 feet; thence

North 00°00’00” East perpendicular to the North boundary of said North One-half of the Northeast Quarter of the Southeast Quarter a distance of 98.53 feet to the TRUE POINT OF BEGINNING.  
3/25;4/1,8,15/09

**SYNOPSIS OF COMMISSIONER’S MINUTES**

**MARCH 16, 2009**

Approved request for refund to Givens-Pursley.

Forwarded the Hooley Site Report to Planning & Zoning.

Approved proposed fee changes for Planning & Zoning.

Payment of Bills: Current Expense \$81,363, Road & Bridge \$1,161, Fair Grounds \$995, Probation \$991, Health District \$4,234, Museum \$113, Indigent \$890, Revaluation \$947, Solid Waste \$13,041, Weed \$157, 911 \$3,377.

Proclamation of 2010 Census.

Draw-Down request for Museum Complex.

Board of Equalization: no business

Letters sent regarding S.B. 1124-1125.

Indigent & Charity 09-08 approved.

Adoption of Natural Resources Plan.

Adoption of Interoperable Communications Plan.

Approved MOA for Probation Department.

AS400 IBM Printer given to Gem County.

Executive Session 67-2345 (f).

Teleconference with District 23 delegation.

Authorized payment of appropriate charges for Grant billing.

Authorized per diem for Prosecutor’s travel.

Recessed until Wednesday for Travel Plan.

Adjourned.

The minutes can be viewed in the Clerk’s office or on line at OwyheeCounty.net

4/1/09

**NOTICE**

The Owyhee County Board of Commissions has adopted resolution 09-08 which amends the Planning and Zoning fee schedule. The fees which are affected by this resolution are as follows:

Single family residence conditional use permit – was \$2008. now \$1200.

Modification of special condition was \$1500 now \$1000.

Time extension was \$2008 now \$1000.

Minor subdivision was \$2500 now \$1600 for 1<sup>st</sup> lot, and \$300 for each additional lot.

Development agreement was \$5000 now \$2500

Certificate of Zoning Compliance was \$100 now \$25

The complete fee schedule is available for review at the Planning and Zoning office or on the county web site www.owyheecounty.net. For questions or more information on the new fee schedule, please call 495-2095.  
4/1/09

**NOTICE OF DEADLINE FOR FILING DECLARATION OF CANDIDACY PLEASANT VALLEY SCHOOL DISTRICT NO. 364 OWYHEE COUNTY, IDAHO**

Notice is hereby given that the deadline for filing nominating petitions for the election of one (1) Trustee for a term of three (3) years from Trustee Zone 3, not later than 5:00 p.m., Friday, April 17, 2009. The election will be held on May 19, 2009. Any person legally qualified to hold the office of school trustee in Pleasant Valley School District No. 364, Owyhee County, Idaho, may file a declaration of candidacy for the office, each of which shall bear the name of the candidate, state the term for which the declaration of candidacy is made, and bear the signature of not less than five (5) school district electors resident of the trustee zone of which the candidate is resident. A declaration of candidacy may be obtained at the Pleasant Valley School District Office, Owyhee County, Idaho. The declaration shall be filed with the Clerk of the Board of Trustees of school district not later than 5:00 p.m. on the fifth Friday preceding the day of election of trustees.

Rosa Maria Lowry, Clerk  
Board of Trustees, Pleasant Valley School District 364  
4/1,8/09



[www.owyheepublishing.com](http://www.owyheepublishing.com)

Your web access to:  
Breaking County News  
Local Links  
Past issues of the Owyhee Avalanche  
Ad rates & contact information  
subscription information



# Public notices



## NOTICE OF TRUSTEE’S SALE

Trustee’s Sale No. 02-FMB-67674 NOTICE IS HEREBY GIVEN that, PIONEER LENDER TRUSTEE SERVICES, LLC, the duly appointed Successor Trustee, will on May 29, 2009, at the hour of 11:00 AM, of said day, FRONT STEPS OF THE OWYHEE COUNTY COURTHOUSE, 20381 STATE HWY 78, MURPHY, ID, sell at public auction to the highest bidder, for cash, in lawful money of the United States, all payable at the time of sale, the following described real and personal property (hereafter referred to collectively as the “Property”), situated in the County of OWYHEE, State of Idaho, to-wit: All that portion of Lot 4 of Section 19, Township 6 South, Range 6 East, Boise Meridian, Owyhee County, lying South and East of the right of way of State Highway No. 51, as it existed July 8, 1962. Excepting therefrom the following: A parcel of land being a portion of the Southwest Quarter of Section 19 and a portion of the Northwest Quarter of Section 30, Township 6 South, Range 6 East, Boise Meridian, Owyhee County, Idaho, more particularly described as follows: COMMENCING at an aluminum cap marking the Southwest corner of said Section 19; thence along the South boundary of said Section 19 North 89° 21’ 13” East 295.47 feet to the POINT OF BEGINNING on the centerline of Hot Springs Road; thence along said centerline North 54° 26’ 24” West 142.97 feet to an iron pin on the southerly right of way line of State of Highway No. 51, F.A.P. No. S-97 (1) marking a point on a curve; thence along said Southerly right of way line along the are of curve to the left having a radius of 602.96 feet, a central angle of 03° 11’ 40”, a length of

33.62 feet and along chord bearing North 48° 19’ 57” East 33.61 feet to an iron pin marking a point of tangent; thence continuing North 46° 44’ 07” East 170.47 feet an iron pin; thence leaving said Southerly right of way line South 37° 36’ 39” East 273.24 feet to an iron pin on the centerline of a certain County Road; thence along said centerline South 44° 48’ 04” West 5.16 fEet to an iron pin on said South boundary of Section 19; thence along said South boundary South 89° 21’ 13” West 196.06 feet to the POINT OF BEGINNING. . Also excepting therefrom: Any portion thereof lying within the Bruneau-Hot Spring County Road. The Trustee has no knowledge of a more particular description of the above-referenced Property but, for purposes of compliance with Section 60-113 of Idaho Code, the Trustee has been informed that the address of 45287 HIGHWAY 51 , BRUNEAU, ID 83604. is sometimes associated with said real property. Said sale will be made without covenant or warranty regarding title, possession or encumbrances to satisfy the obligation secured by and pursuant to the power of sale conferred in the Deed of Trust executed by CHRISTOPHER O. BACHMAN, A MARRIED MAN AS HIS SOLE AND SEPARATE PROPERTY, as Grantor, to PIONEER TITLE AND ESCROW, as Trustee, for the benefit and security of MORTGAGE ELECTRONIC REGISTRATION SYSTEMS, INC. AS NOMINEE FOR ITS SUCCESSORS AND ASSIGNS, as Beneficiary, dated 3/22/2006, recorded 3/28/2006, under instrument No 255733, Mortgage records of OWYHEE County, IDAHO, the beneficial interest in which is presently held by INDYMAC FEDERAL BANK, FSB. THE ABOVE

GRANTORS ARE NAMED TO COMPLY WITH SECTION 45-1 506(4)(A), IDAHO CODE NO REPRESENTATION IS MADE THAT THEY ARE, OR ARE NOT, PRESENTLY RESPONSIBLE FOR THIS OBLIGATION. The default for which is sale is made is the failure to pay when due under the Deed of Trust Note dated 3/22/2006, THE MONTHLY PAYMENT WHICH BECAME DUE ON 10/1/2008 AND ALL SUBSEQUENT MONTHLY PAYMENTS, PLUS LATE CHARGES AND OTHER COSTS AND FEES AS SET FORTH. Amount due as of January 23, 2009 Delinquent Payments from October 01, 2008 4 payments at \$895.90 each \$3,583.60 (10-01-08 through 01-23-09) Late Charges: \$115.41 Beneficiary Advances: \$148.00 Suspense Credit: \$0.00 TOTAL: \$3,847.01 All delinquencies are now due, together with unpaid and accruing taxes, assessments, trustee’s fees, attorney’s fees, costs and advances made to protect the security associated with this foreclosure. The principal balance is \$134,286.26, together with interest thereon at 6.875% per annum from 9/1/2008. until paid. The Beneficiary elects to sell or cause the trust property to be sold to satisfy said obligation Anyone having any objection to the sale on any grounds whatsoever will be afforded an opportunity to be heard as to those objections if they bring a lawsuit to restrain the same. DATED: 1/23/2009. PIONEER LENDER TRUSTEE SERVICES, LLC Trustee By Kara Lansberry, Assistant Trustee Officer c/o REGIONAL TRUSTEE SERVICES CORPORATION 616 1st Avenue, Suite 500 Seattle, WA 98104 Phone (206) 340-2550 Sale Information <http://www.rtrustee.com> ASAP# 2984574 4/1,8,15,22/09

## HELP WANTED

**Need April 8 & 9 yard work**, \$8/hr, will include lifting, digging, planting trees, spraying weeds w/ backpack sprayer, other related work. 896-9953

**Calf feeder wanted**, Homedale area, female preferred, experience preferred. Call Owyhee Dairy 337-4226

**Wanted Volunteer Camp Hosts** for Idaho Power CJ Strike Parks. Two positions available. Applicants must be at least 18 years of age, and have their own R.V. Anyone interested please mail resume before April 17th. Idaho Power, 26378 Strike Dam Cutoff Rd., Bruneau, ID. 83624, 208-388-6921 Fax 388-6932

**Drivers/CDL Career Training** w/Central Refrigerated. We train, employ w/\$0 down financing. Positions avail. Now! 800-525-9277 x6033

## LOOKING FOR A JOB!!!



There is no time like now to join the Army National Guard.

You will receive:  
Training  
Education  
Adventure  
Money  
Service to Country

Enlisting ages of 17-42.

For more information, contact:  
**SSG Matt Wilson**  
208-899-2096  
208-922-2046  
[www.1800goguard.com](http://www.1800goguard.com)



### T Lawn Service

Commercial & Residential  
Mowing & Leaf Removal

208-495-2383  
208-899-7470

Tony & Priscilla Ryska

**Subscribe Today!**  
**The Owyhee Avalanche**  
**208-337-4681**

## The Owyhee Avalanche

Put your ad where 8,000 local customers can see it.  
Weekly, monthly or all year round.

Value for your ad dollar, and ads to suit every need.  
All ads run in the Avalanche also run in the 6,400 circulation Wrap-Up, increasing your coverage.

Open rate/column inch: \$6	Inserts? No problem.
1 Page B&W: \$450	Standard format tabloids:
1/2 Page B&W: \$225	Up to 8-page tab: \$.05 ea.
1/4 Page B&W: \$112.50	12- or 16-page tab: \$.075 ea.
Business directory: \$40/mo.	Specialty work, mailers and other printing, too.

Add some **COLOR!**  
Each added color \$2/column inch, minimum sizes apply.

Unusual layouts subject to rate adjustment.

**Call us at (208) 337-4681**  
Display ads and inserts/mailers: [robaman@spro.net](mailto:robaman@spro.net)  
Classified ads (\$5 first 20 words): [jstuthiet@cablone.net](mailto:jstuthiet@cablone.net)

*The Original  
"Lap-top" News Source*



**Doesn't need  
Plugged in  
to anything.**

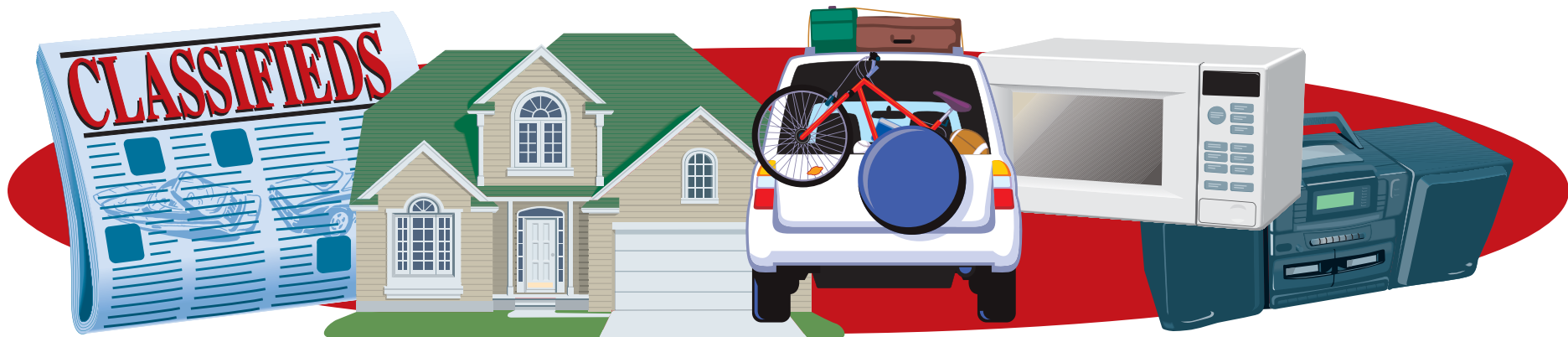
**Available  
anytime, anyplace**

**Subscribe Today!**

**The Owyhee Avalanche**

PO Box 97, Homedale, 83628  
208-337-4681 • Fax 208-337-4867





## REAL ESTATE

**Texas Land-\$0 Down!** 20-acre Ranches, near El Paso. Beautiful Mountain Views. Road Access. Surveyed. \$15,900. \$159/mo. Money Back Guarantee. Owner Financing. 800-843-7537. [www.sunsetranches.com](http://www.sunsetranches.com)

**Abandoned home.** Bank desperate. Easy qualify. Take over low monthly payment. 208-323-2238

**Own a new home, your land is your credit.** If you own land or family will give you land, You're Approved! Only need one line of good credit. 208-378-0981

**Need a New Home?** Payment Protection Plan! Loose your job in the 1st 24 mos. of financing, we will pay 3 mos. payments! The time is right to buy a new home! Stop worrying! Call Today! 208-466-1276

**Government will pay you** up to \$8000.00 to buy a New Home. Don't miss your share of the stimulus bail out money, no gimmick's, no hype. Call now for info!! 208-466-1276

## FOR RENT

**2400 sq.ft heated shop/warehouse,** sits on 3/4 of an acre, partially fenced, office, bath, wired for 220. For ag, commercial or contractor. \$500/mo. plus dep. Call Dave 208-573-1704

**Storages for rent,** Pioneer Mini Storage, 4155 Pioneer Rd, Homedale. 208-337-4589, 208-573-2844

**2 & 3 bdrm mobile homes** in town. \$395 (and up) + deposit. Please call 208-340-9937, 208-850-4117

**Homedale, 1 & 2 bdrm** apartments avail. Rent from \$395-\$550 plus deposit. Allen Property Mgmt 467-2132

**Marsing Storage, Inc.,** Hwy 55 & Van Rd. Boat & RVs welcome. Call 208-830-1641

Buy it, sell it, trade it, rent it...  
in the Classifieds!

## FARM AND RANCH

**Salers & Angus bulls,** 2 yr. olds & yearlings, semen tested, delivery available, B&B Livestock 208-278-3518

**For sale:** Jersey bull calves, Owyhee Dairy 337-4226

**Custom Ground Preparation.** Alfalfa & pasture seeding. Free estimate. 208-896-4186, 249-4372

**Alfalfa grass mix,** \$5.75-\$6.50 per bale, under cover, delivery available. Call Paul 899-0187

**Jersey calves for sale.** \$50 start price for month olds; \$150 start price, 3-9 months. Please call 208-337-3783

## FOR SALE

**Firewood for sale.** Get next years Cherry wood cheap. 989-3802

**allseasonsfuninc.com** Best source for new & used RV parts and service, Marsing. 208-573-4195

**Microfiber couch & love seat,** stain resistant, lifetime warranty, brand new in boxes. Retail \$1399. Must sell \$450. 208-888-1464

**Bedroom set 7-piece cherry set** Brand new in boxes. List \$2250. Must sell \$450. 208-888-1464

**Bed-queen pillowtop mattress** Brand new, still in plastic, warranty. Sacrifice \$109. 208-921-6643

**King-sized pillowtop mattress** New, in bag, with warranty. List \$750. Sacrifice \$199. 208-921-6643

**Cherry Sleigh bed** solid wood w/mattress set. Brand new in box. \$299. 208-888-1464

**Used tractor parts** 100's of salvaged farm tractors and combines. Nampa Tractor Salvage, 9055 Hwy 20, Nampa, ID 83687 (208) 467-4430

**Roll ends:** Great for packing material, building fires, lining birdcages or for your kids to doodle on. The Owyhee Avalanche, Homedale

## YARD SALE

**6-family yard sale.** Too much to list! April 3&4, 8am-5, Pioneer Rd., east off Hwy 95, follow signs.

**Multi-family yard sale.** Fri & Sat, 8am-? Boats, fishing poles, tools, 4-wheeler, 3/4 ton 76 Ford pickup, furniture, washing machine, clothes, & misc. 4783 Titus Ln., Marsing. Follow signs from Hwy 95 & Market Rd or ION.

**Sat & Sun April 4&5, 8am-?** 209 N 1s St. W. 1975 Sabre Craft boat, boy clothes sz10-16, girls sz 6&10&12, men/women clothing, toys, bikes & more.

## WANTED

**Wanted,** newer large rental home. Agate Creek Property Mgmt. 208-880-7430 [maureenj@agatecreek.com](mailto:maureenj@agatecreek.com)



## Consignment RV's needed!

**Motorhomes, travel trailers, or 5th wheels.**

We've been in the same location for nearly 35 years. Local, experienced and well respected dealership. Was Bob's RV in Nampa, now...

**Happy Trails RV**  
3318 Caldwell Blvd.  
Nampa 467-2533

## NOTICE

**Have you been overcharged** by Frontier Communications? Please call the Idaho Public Utilities Commission toll-free: 1-800-432-0369

## SERVICES

**Garden rototilling,** 22 horse 4x4 tractor w/42" tiller. Free estimates. 250-3885

**Lawn Care:** mowing, trimming, weeding, spring clean-ups & more! Please call 208-880-9080

**Small Tractor Services - 6'** Rototiller, Field Mower, Scraper, Loader, Post Hole Digger, etc. Reasonable Rates. 208-870-5313

**Anderson Lawn Care.** Mowing, trimming & all other lawn care needs. Free estimates. Call 989-3515 or 936-0510

**Owyhee Mountain Lawn Care.** Spring clean-ups, weekly lawn mowing, all your lawn care needs. Free estimates call Tyler 880-1573

**Trees topped & removed.** Clean up & stump removal available. 337-4403

**Tree Service Inc.** Family operated. Specializing in tree trimming, pruning, removal. For the most reliable job & service call 208-591-0330. Lic/insured.

**Crystal Bell Window Cleaning.** Locally owned, call for estimate. Licensed & Insured. 208-573-8099 ask for Kevan munked@speedyquick.net

## NOTICE

**Representatives from the Assessor's office** will be at the Homedale, Marsing, and Grandview Senior Citizens centers, plus the Bruneau Library to help anyone fill out their applications for the Property Tax Reduction Program (Circuit Breaker). The schedule will be as follows: Homedale, April 8th 10-12 & 1-4, Marsing, April 2nd 10-12. We will also be available to make home visits to those citizens unable to attend. Please call our office at 495-2817 to make arrangements or if you have any questions. The applications need to be filled out and turned in by April 15, 2009. Brett Endicott, Owyhee County Assessor

## SERVICES

**Top soil, fill dirt** and all kinds of gravel products delivered and/or placed. Jim 573-5700

**Backhoe, trackhoe,** grader, dump truck or belly dump services for hire. Demolition, driveways & general excavation. Jim 573-5700

**Dog boarding** at my home. Outdoor and indoor facilities. Knowledgeable & attentive care for your best friend. Call Rebekka at 208-861-6017 [rockinrcountrykennel.com](http://rockinrcountrykennel.com)

**Tim's Small Engine Repair** Complete servicing and repair on all makes and models of Motorcycles, ATVs & Power Equipment 30916 Peckham Rd. Wilder 5 1/2 miles west of hwy 95. 482-7461

### JW Sharpening Service

#### Small Engine Repair

208-337-3556

Pickup Stations:

Marsing: Harvey's Auto Center

Wilder: Wilder Building Center



337-3556 Homedale Snake River

### Hair Depot

102 E. Wyoming Ave., Homedale

#### Rebecca's Specials

Tuesdays are Senior Discount Day

\$30 Full Set of Nails

\$45 Massage (1st time only)

\$55 for 2 pedicures

337-4247 or 899-3419

Buy it, sell it, trade it, rent it...  
in the Classifieds!

## LOST AND FOUND

**Found - female Dingo mix dog,** found 3/17 Wilder/95. Fore more info call 482-7360

## KNOCK, KNOCK – WHO'S THERE??

Fantastic interest rates, low prices, plentiful property inventory, and motivated sellers to create once-in-a-lifetime conditions in the real estate market. Qualified first-time home buyers can take advantage of the \$8000 tax credit – even use it for a down payment and/or closing costs through a **Tax Credit 2nd Loan** now available through certain lenders. Don't hesitate – call today!!

\*AVAILABLE: 1+ acre building site, gentle slope, nice view, Homedale Schools - \$32,500

\*PRICE SLASHED: Birds-eye setting on Snake Rvr, 1/3 ac. 3400+ sq. ft. 5 bed/3ba home w/walkout basement - \$275,000 \$250,000

\*PRICE REDUCED: Room for horses on 2.62 ac. w/3 bed/2.5 ba home on Wilder rim w/shop - \$299,900 \$279,900

\*PRIVATE RANCH: on Succor Creek with lovely 3 bed/3 ba home in paradise- call for more info on cow/calf set-up

\*AG OR DEVELOPMENT: 38.68 ac with CUP approved for 3 splits on Ustick/Fish near golf course – MAKE OFFER!



American Dream  
Real Estate Inc.



Phone: 208-573-7091

[www.pattizatica.com](http://www.pattizatica.com)

## Looking To Buy Or Sell A House Or Property?

CALL ME!



BECKI EMERY, Realtor®

Realty Executives Choice One, Nampa

392-7904 or 337-4752



# The Owyhee Avalanche

## OWYHEE COUNTY'S ONLY SOURCE FOR LOCAL NEWS

Call today to advertise or subscribe  
208-337-4681

[www.theowyheeavalanche.com](http://www.theowyheeavalanche.com)



Easter Supplies  
\*\*\*\*\*  
Baskets  
Candy  
Eggs/Dye  
Flowers  
& more!



# Snake River Mart



## HOP IN FOR VALUES

### Spring Planting! Veggie Plants & Perennials are in!

Beef Loin

**T-Bone Steak**



**\$5.99**  
lb.

Boneless Pork

**Sirloin Chops**



**\$2.19**  
lb.

1 lb.

**Baby Carrots**



**\$1.09**  
ea.

Fresh Ripe 1 lb.

**Strawberries**



**2 \$5**  
for

Gold-N-Plump Family Pack

**Wings, Drums, Thighs**



**\$4.99**  
ea.

Boneless Pork

**Sirloin Roast**



**\$1.99**  
lb.

**Red Bell Peppers**



**69¢**  
ea.

Seedless

**Green Grapes**



**\$1.39**  
lb.

Western Family 16 oz.

**Sliced Ham**

**\$3.19**  
ea.

Bar-S 32 oz.

**Corn Dogs**

**\$3.99**  
ea.

Western Family 12 oz.

**Bacon**

**\$2.19**  
ea.

Bone-In

**Turkey Breast**

**\$1.59**  
lb.

Western Family 12 oz.

**Cheese Singles**

**\$1.79**  
ea.

Farmland

**Hams**

**\$1.69**  
lb.

Fancy

**Navel Oranges**

**69¢**  
lb.

5 lb.

**Idaho Potatoes**

**\$1.39**  
ea.

**Cantaloupe**

**89¢**  
lb.

River Ranch

**Salad & Coleslaw Mix**

**\$1.19**  
ea.

8 oz. Whole

**Mushrooms**

**\$1.99**  
ea.

**Lemons**

**3 \$1**  
for

**Gatorade**



**\$1.29**  
ea.

32 oz.

Delmonte 14.25-15.25 oz.

**Corn & Green Beans**

**\$1.19**  
ea.

Western Family

**Pasta**



**\$1.19**  
ea.

12 oz.

Wishbone 7-16 oz.

**Salad Dressing & Spritzers**

**\$2.39**  
ea.

**Coca Cola Products**



**\$4.99**  
ea.

12pk 12oz Cans

2 Liter Bottle

**Coke Products**

**\$1.39**  
ea.

**Milwaukees Best Beer**



**\$12.99**  
ea.

30pk 12oz Cans

12pk 12oz Bottles

**Corona Beer**

**\$13.99**  
ea.

Budget Gourmet Frozen Entrees 8 oz. <b>\$1.19</b> ea.	Hunt's Pasta Sauce 26-26.5 oz. <b>\$1.39</b> ea.	Dansani Water 24pk .5 ltr Bottles <b>\$5.99</b> ea.	Lysol Cleaners Asst'd 22-32 oz. <b>\$2.69</b> - <b>\$3.49</b> ea.
Western Family Orange Juice 96 oz. <b>\$3.89</b> ea.	Pillsbury Cake Mixes 18.25-18.9 oz. <b>\$1.59</b> ea.	Western Family Honey Graham Crackers 28.8 oz. <b>\$3.89</b> ea.	Lay's Potato Chips 8.5-11.5 oz. <b>\$3.49</b> ea.
Western Family Non-Dairy Topping 7 oz. <b>99¢</b> ea.	Nestle Chocolate & Butterscotch Morsels 11.5-12 oz. <b>\$2.49</b> ea.	Valasic Bread Butter & Crunchy Kosher Dill Pickles 24-46 oz. <b>\$2.69</b> ea.	Tostitos Chips & Dips 9-15 oz. <b>\$3.49</b> ea.
HomePride White or Wheat Bread 20 oz. <b>\$2.39</b> ea.	Post Cereals Asst'd <b>\$3.19</b> ea.	Western Family Ravioli & Rings 15 oz. <b>\$1.19</b> ea.	Hawaii's Own Frozen Juice 12 oz. <b>\$1.19</b> ea.
Rice & Pasta Roni 4.3-7.2 oz. <b>\$1.29</b> ea.	Campbell's Select Soups 18.6-19 oz. <b>\$1.79</b> ea.	Carnation Evaporated Milk 12 oz. <b>\$1.29</b> ea.	Western Family Whip Topping 8 oz. <b>\$1.29</b> ea.
Western Family Squeez Mustard 16 oz. <b>\$1.09</b> ea.	Yuban Coffee 33 oz. <b>\$8.99</b> ea.	Banquet Frozen Dinners Asst'd <b>\$1.29</b> ea.	Western Family Extreme & Premium Ice Cream 56 oz. <b>\$3.59</b> ea.

**HOURS: Mon. - Sat. 6:00 a.m. to 9:00 p.m. - Sunday 7:00 a.m. to 8:00 p.m.**  
**Marsing, Idaho**

**WE RESERVE THE RIGHT TO LIMIT QUANTITIES AND CORRECT PRINTED ERRORS • PRICES EFFECTIVE 04/01/09 thru 04/07/09**